

# COLORADO CHESS INFORMANT

**Analyzing With Computers**



The *Colorado State Chess Association, Incorporated*, is a Section 501(C)(3) tax exempt, non-profit educational corporation formed to promote chess in Colorado. Contributions are tax deductible.

Dues are \$15 a year or \$5 a tournament. Youth (under 20) and Senior (65 or older) memberships are \$10. Family memberships are available to additional family members for \$3 off the regular dues.

- Send address changes and memberships to *Jesse Cohen*.
- Send pay renewals to *Shirley Herman*.
- See back cover for EZ renewal form.

The *Colorado Chess Informant* (CCI) is the official publication of the CSCA, published four times a year in January, April, July and October.

Articles in the CCI **do not** necessarily reflect the views of the CSCA Board of Directors or its membership.

#### CSCA Board of Directors

##### President:

Paul Covington  
*Checkmate*  
[@CovingtonComputers.com](mailto:@CovingtonComputers.com)

##### Vice President:

Shaun MacMillan  
*ChessOmaniac@gmail.com*

##### Secretary:

Jesse Cohen  
*JesseRCohen@gmail.com*

##### Treasurer:

Shirley Herman  
*Shirley@NorthGateChess.com*

##### Junior Representative:

Jackson Chen  
*tiger2chen@gmail.com*

##### Member at Large:

LM Brain Wall  
*BrianWallChess3@taom.com*

#### CSCA Appointees

##### USCF Delegate:

Richard "Buck" Buchanan  
*buckpeace@pcisys.net*

##### Alternate:

Dean Brown  
*navajo36us80917@comcast.net*

##### CCI Editor:

Fred Eric Spell  
*spellfe@hotmail.com*

##### Colorado Chess Tour:

Jackson Chen  
*tiger2chen@gmail.com*

##### Correspondence Chess:

Klaus Johnson  
*csaemailcc@gmail.com*

##### Scholastic Chess:

Zachary Bekkedahl  
*info@chessmatesfc.com*

##### Webmaster & Tournament

**Clearinghouse:**  
Rick Nelson  
*rick@ramdesigns.com*

#### On the cover:

Picture from Master Chess Openings website  
[www.MasterChessOpenings.com](http://www.MasterChessOpenings.com)

## From the Editor

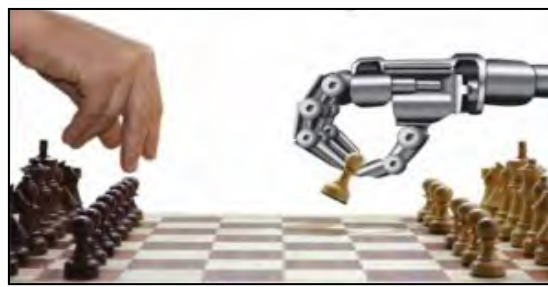
In this issue you will find something a little different from the usual norm. Colin James III has submitted a number of articles on various openings for your reference enjoyment using computer chess programs for analysis.

It is something, how far that computer chess programs have come in such a relative short amount of time. Today they are so powerful that even that app loaded on your cell phone could routinely defeat Grandmasters, even the current World Chess Champion if he would decide to take on the silicone monster, which I doubt that he ever would. It could be extremely embarrassing to have his Norwegian backside thoroughly kicked from here to next Tuesday.

Today, players use chess programs to work out ideas and analyze, even Grandmasters regularly use them to test out ideas before tournaments or matches. Perhaps that is how it should be. Gone are the days of "Man vs Machine", it is just no contest anymore.

May Caissa be with you.

*Fred Eric Spell*



## In This Issue

- |                                   |                                |
|-----------------------------------|--------------------------------|
| 3. Vice President's Message       | <i>Shaun MacMillan</i>         |
| 4-11. Various Opening's Treatise  | <i>Colin James III</i>         |
| 12. The Chess Detective®          | <i>NM Todd Bardwick</i>        |
| 14. Colorado Springs Open         | <i>Richard "Buck" Buchanan</i> |
| 20. Tactics Time!                 | <i>Tim Brennan</i>             |
| 22. Zombie Apocalypse             | <i>Matthew O'Hara</i>          |
| 23. 2014-2015 Colorado Tour       | <i>Jackson Chen</i>            |
| 24. Colorado Chess Club Directory |                                |
| 25. Upcoming Colorado Tournaments |                                |

#### Informant Article Submission Deadlines:

**January issue** - December 1 / **April issue** - March 1

**July issue** - June 1 / **October issue** - September 1

(Email articles to [spellfe@hotmail.com](mailto:spellfe@hotmail.com))

© 2015 Colorado State Chess Association

# Vice President's Message

## Electronic voting/by-laws proposed changes.

I joined the CSCA board because I felt the organization was becoming irrelevant after witnessing events the last couple years. In particular if you couldn't get to the Colorado Open you had no or difficult representation and the results didn't seem to always represent the membership as a whole-not surprising when so few attended the meeting. But, rather than complain I decided to help out.

First, thanks to all the volunteers and sounding boards who pitched in and gave advice and did the legwork to investigate by-laws and electronic voting in other states and the USCF take on it and looked at several (not free) electronic voting systems available.

Paul will be soon be calling a membership meeting to vote on a ballot measure, per current by-laws requirements, to place the proposed changes before the membership. It will include the exact wording and plans. Here's the basics.

Electronic voting:

Implement voting by email on some votes (an "e-vote"). A ballot may be an e-vote if..

1. The President declares it so (always assume no other by-law restrictions such as certain Board and fiduciary responsibilities).
2. The Board votes by majority to make it so.
3. By membership petition.

The process:

There will be a minimum time for the e-vote to be in front of the membership for open discussion, likely (we're still hammering out the details) 3 weeks. This allows for discussion by individuals, on blah-blah-blah's, sorry, blogs, etc.

The author of the e-vote will be able to post on the CSCA site an official "pro" discussion. We'll also post a "con" side but need to figure out who would "own" that (likely a Board selected volunteer).

An e-mail will be sent to all members who wish to be included, meaning they've provided an email address, with the ballot measure wording, website for information, and intrinsic security information. Security is a major consideration. There are several methods to insure the email comes back from the address it was sent to and not forwarded to a third party or intercepted.

"Replying" with For or Against completes the member side.

Ballots will be tallied by the Secretary or Board.

Communication:

The President will announce the results either on the official "Presidents Plate" or during a membership meeting.

Separately, we'll also be proposing the Board be elected by e-vote, and "cleaning up" legal issues around minors acting as agents for the CSCA.

My personal take on this is it's a way to improve input with low risk while maintaining membership ability to make changes via the petition route.

*Shaun MacMillan*  
Vice President / CSCA



## Note on Alekhine's Defense Variation B03

© Copyright 2015 by Colin James III. All rights reserved.

The book moves of B04 are **1.e4 Nf6 2.e5 Nd5** in Diagram 1.

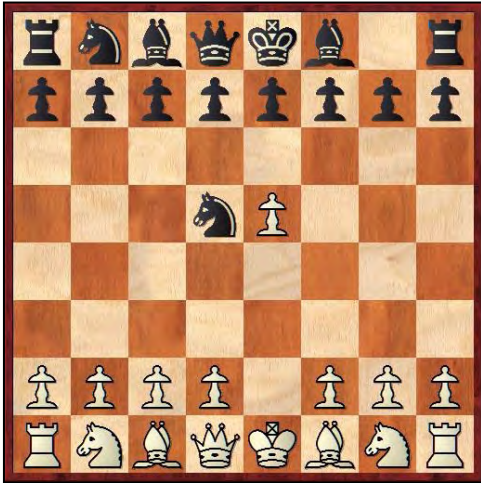


Diagram 1

The line continues as three transpositions of **3.c4 Nb6, 3.d4 d6,** and **3.Nf3 d6**, through ply 7 in Diagram 2.

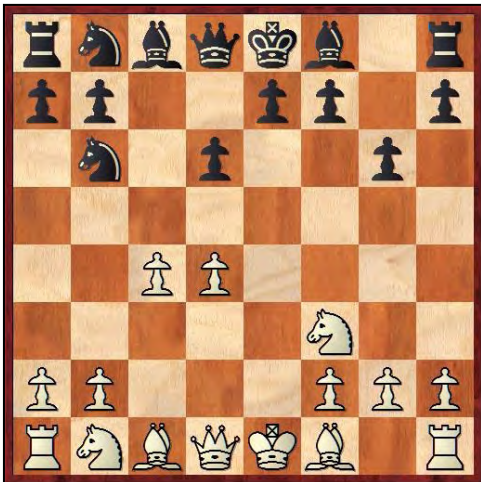


Diagram 2

Houdini 4 Pro evaluates this to (+0.30) through ply 24 at depth 40 for a draw:

**1.e4 Nf6 2.e5 Nd5 3.c4** (transposes 3.d4 d6 4.Nf3 g6 5.c4 Nb6 6.exd6 cxd6 7.Be2 Bg7; transposes 3.Nf3 d6 4.c4 Nb6 5.exd6 cxd6 6.d4 g6 7.Be2 Bg7) **3...Nb6 4.d4 d6 5.Nf3 g6 6.exd6 cxd6 7.Be2 Bg7 8.h3 0-0 9.Nc3 Nc6 10.0-0 Bf5 11.Re1 Rc8 12.g4 Bd7 13.c5 dxc5 14.dxc5 Na8?! 15.Be3 Be6 16.Qa4 Qa5 17.Qxa5 Nxa5 18.Nd4 Nc7 19.Rad1 Rfd8 20.Bf3 Be4 21.b3 Ba6 22.Kg2 e5 23.Nc2 Nc6 24.Bxc6 bxc6 ½-½**



**Alexander Alekhine**

4th World Chess Champion / 1927-1935 & 1937-1946

In one of the first instances that Alexander Alekhine used his namesake defense:

**Budapest 1921 / Round 9**

**Endre Steiner - Alexander Alekhine**

1.e4 Nf6 2.e5 Nd5 3.d4 d6 4.Bg5 dxe5 5.dxe5 Nc6 6.Bb5 Bf5 7.Nf3 Ndb4 8.Na3 Qxd1+ 9.Rxd1 Nxc2+ 10.Nxc2 Bxc2 11.Rc1 Be4 12.Nd4 Bxg2 13.Rg1 0-0 14.Nxc6 Bxc6 15.Bxc6 bxc6 16.Rxc6 Rd5 17.Bf4 e6 18.Ke2 Bc5 19.b4 Bxb4 20.Rxg7 Rd7 21.Be3 a5 22.Rc4 h5 23.Rh4 Bc3 24.Rg5 Rd5 25.f4 f6 26.Rgxh5 Rxh5 27.Rxh5 fxe5 28.fxe5 Bxe5 29.Rh7 Rb5 30.Kf3 Rb2 31.Rh5 Bxh2 32.Rxa5 Bd6 33.Ke4 Kd7 34.Bd4 Rd2 35.Be3 Re2 36.Kd3 Re1 37.Bd4 Rc1 38.Be3 Rd1+ 39.Ke4 Re1 40.Kd3 e5 41.Bf2 Rf1 42.Be3 Ke6 43.Ke4 Rh1 44.Bf2 Rh2 45.Be3 Rh4+ 46.Kd3 Bb4 47.Ra7 c5 48.a3 c4+ 49.Ke2 Bd6 50.Ra8 Rh2+ 51.Kd1 Rh3 52.Kd2 Kd5 53.Rd8 c3+ 54.Ke2 Ke4 55.Rxd6 Rxe3+ 56.Kf2 Rd3 57.Rc6 Rd2+ 58.Ke1 Kd3 59.Rd6+ Kc2 60.Re6 Rd5 61.Ke2 Kb3 62.Rc6 c2 0-1



## Brief Analysis of the ARB System (A00)

© Copyright 2015 by Colin James III. All rights reserved.

The ARB system is named as such by its author Anthony R. Brown who invented it to play against computer engines. A merit of the system, as the Hippopotamus opening (B00), is that the pawn structure dictates both the defense and the offense, supporting Philidor that pawns are the soul of chess.

Brown assigns piece values as: Q 9.0; R 4.5; B 3.5; N 3.5; and P 1.5. The rook has a value lower than 5.0 for the purpose of being a pawn nanny on the flank or for sacking.

The pattern of pieces is the same for Black or for White in reverse. For Black, Brown's moves not in strict order are: **1...e6 2...d6 3...h6 4...a6...g6 6...b6 7...Bb7...Bg7**, followed later by knight moves such as **Ne2** and **Nd2**, as in Diagram 1. For White, Brown's moves are the same but on opposite colored squares as: **1.e3 2.d3 3.h3 4.a3 5.g3 6.b3 7.Bb2 8.Bg2**, with a move in hand over the black pattern.



Diagram 1

Brown often keeps the king uncastled to move around behind the mass of pieces in the center of the board. In Brown's expositions, the move choice by the computer is not always the strongest from the engine. Hence the same chess engine does not necessarily reproduce the same computer moves as published by Brown. The time control is usually 60 seconds per move. Brown typically plays a chess engine only once to demonstrate his win. No anthology of multiple games per engine is published as yet. The last message traffic for ARB is from 09/2013 of non-academic internet writings.

ARB is not an effective strategy to obtain computer draws.

The ply transcript below is from Houdini Pro x64B version 28 with six active processors running above 10,000 kN/s with 9.2 GB hash table through level 37.

1.e3 e5 2.d3 d5 3.h3 Nf6 4.a3 c5 5.g3 Nc6 6.Ne2 (transpose 6.Bg2 Be6 7.Ne2) 6...Be6 in Diagram 2.



Diagram 2

7.Bg2 Bd6 8.g4 0-0 9.Nbc3 h6 10.Ng3 Qd7 11.0-0 Rad8 12.b3 a6 13.Bb2 Rfe8 14.Rc1 Bc7 15.Nb1 d4 16.Nd2 b6 17.Re1 Nd5 18.Nde4 Rf8 19.a4 g6 20.exd4 exd4 21.a5 Nxa5 22.Qd2 Kg7 23.Ra1 Bf4 24.Qd1 Qc7 25.Ne2 Nc6 26.Rxa6 Bc8 27.Ra1 f5 28.gxf5 Bxf5 29.c3 Bxe4 30.dxe4 dxc3 (transpose 30...Nxc3 31.Nxc3 dxc3) 31.Nxc3 Nxc3 32.Bxc3+ Nd4 33.Ra2 Be5 34.Qa1 Rf7 35.Re3 Kh7 36.Qf1 b5! (commence the win) 37.Bb2 Qe7 38.Rd3 Qh4 39.Bxd4 Bxd4 40.Rdd2 Qg5 (prepare the king side whammy, with a rook and opposite color bishop, in Diagram 3, and ending with (-#29) 83.Ra2) 0-1



Diagram 3



## C14 French Defense, Stahlberg 7.f4 0-0

© Copyright 2015 by Colin James III. All rights reserved.

The book moves of the C14 French Defense, Classical, are: 1.e4 e6 2.Nc3 d5 3.d4 Nf6 4.Bg5 Be7 5.e5 Nfd7 6.Bxe7 Qxe7 in Diagram 1.

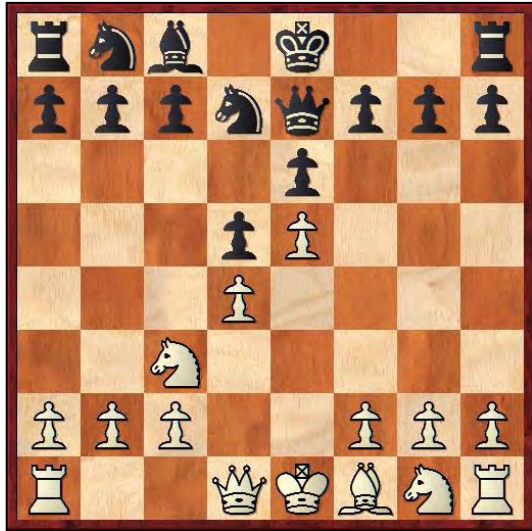


Diagram 1

The main variations in order of decreasing advantage for White are: (+0.09) Steinitz 7.f4; and (+0.05) Tarrasch 7.Bd3.

Other variations resolve to (+0.00) as in alphabetical order: Alapin 7.Nb5; Pollock 7.Qg4; Rubenstein 7.Qd2; and Unnamed 7.a3.

The Steinitz variation 7.f4 continues into the Stahlberg variation 7...0-0 in Diagram 2. This line continues through ply 23 and depth 32 in Diagram 3 as: 8.Nf3 (transposes 8.Bd3 c5 9.Nf3 h6) 8...c5 9.Bd3 h6 10.0-0 Nc6 11.b3 cxd4 12.Nb5 a6 13.Nbxd4 Nc5 14.c3 Nxd3 15.Qxd3 Bd7 16.a4 Rfc8 (long transposition 16...Rac8 17.Qd2 Qc5 18.Rac1 Rc7 19.h3 Rfc8 20.Kh2 Qb6 21.Rfe1 Na5 22.Rb1 Nc6 23.Rec1 Ne7) 17.Rfc1 Qc5 18.h3 Rc7 19.Kh2 Rac8 20.Rc2 Qb6 21.Qd2 Na5 22.Rcc1 Nc6 23.Rab1 Ne7.

A continuation through ply 32 in Diagram 4 is 24.Rb2 Qc5 25.Rbc2 Qb6 26.Qe3 Nc6 27.Ra1 Na5 28.Qe1 Kh7 29.Rac1 Kg8 30.Qd1 Nc6 31.Qd2 Ne7 32.Qe3.

The line remains at the same value of (+0.09). Because the same pieces are moved repeatedly in different sequences, this opening is suited to White or Black for seeking a draw.

The engine used was Houdini 4 Pro x64B version 28, 6 CPU, 9.2 GB hash table, running at about 10,000 kN/s. The hash table was set to uncleared because variations are more quickly reproduced to certain points for tedious back testing.



Diagrams 2, 3 and 4 are below in order.



## Recent Advances in the Latvian Gambit C40

© Copyright 2015 by Colin James III. All rights reserved.

The book moves of C40 are 1.e4 e5 2.Nf3 f5 3.Nxe5 followed by two variations, 3...Qf6 (Diagram 1 - longer with insufficient material, +0.86),



Diagram 1

4.d4 d6 5.Nc4 fxe4 6.Nc3 Qg6 7.f3 Nc6 8.fxe4 Be7 9.Ne3 Nh6!? 10.Qd3 0-0 (transpose 10...Ng4 11.Ned5 0-0 12.Bf4) 11.Ned5 Ng4 12.Bf4 Bg5 13.g3 Be6 14.Be2 Rae8 15.0-0 Bd8 16.Rae1 Ne7 17.Ne3 Nxe3 18.Bxe3 c6 19.a3 Rxf1+ 20.Bxf1 h6 21.Bg2 Bf7 22.Bh3 d5 23.Bf4 Bb6 24.Kh1 Rd8 25.Be5 Qh5 26.Bg2 dxe4 27.Nxe4 Ng6 28.Bd6 Bd5 29.Bb4 a5 30.Bc3 Nf8 31.b4 a4 32.Bb2 Qf7 33.Nd2 Ne6 34.Bxd5 cxd5 35.Nf3 Bc7 36.Kg2 Rf8 37.Rf1 Qh5 38.Bc1 Qg4 39.Be3 Rf6 40.Ng1 Rxf1 41.Kxf1 h5 42.Kg2 h4 43.Ne2 hxg3 44.hxg3 Kf7 45.Bc1 Bd8 46.Bf4 Bf6 47.Be5 Qg6 48.Qxg6+ Kxg6 49.Bxf6 gxf6 50.Kf3 Nc7 51.Nc3 b5 52.Kf4 Ne6+ 53.Ke3 Nc7 54.Ne2 Kf5 55.Kf3 Kg5 56.Nf4 Kf5 57.g4+ Kg5 58.Kg3 f5 59.Nh3+ Kg6 60.Kf3 fxg4+ 61.Kxg4 Kf6 62.Nf4 Ke7 63.Kg5 Kd7 64.Kg6 Ke7 65.Kf5 Kd6 66.Nd3 Ne6 67.c3 Ng7+ 68.Kg6 Ne8 69.Kf5 Nc7 70.Ne5 Ne8 71.Nd3 Ng7+ 72.Kg5 Ne8 73.Nf4 Kc6 74.Kf5 Kd7 75.Nd3 Nd6+ 76.Ke5 Nc4+ 77.Kxd5 Nxa3 78.Nc1 Nc4 79.Nd3 Nd6 80.Kc5 a3 81.Nc1 Ne4+ 82.Kxb5 Nxc3+ 83.Kc4 a2 84.Nxa2 Nxa2 85.b5 Kc8 86.b6 Kb7 87.d5 Kxb6 88.Kd4 Nc3 89.d6 Kc6 90.Kxc3 Kxd6 1/2-1/2



and 3...Nf6 (Diagram 2 - threefold repetition, +0.01).



Diagram 2

A brutal bloodbath must surely ensue fraught with indirection, gratis chess engine technology.

4.Bc4 Qe7 5.d4 Nc6 6.0-0 fxe4 7.Bf4 d5 8.Bb3 Be6 9.c4 dxc4 10.Ba4 Bd7 11.Nc3 0-0-0 12.Bxc6 Bxc6 13.Nxc6 bxc6 14.Rb1 Qb4 15.Be5 Be7 16.Qe2 Rhe8 17.Rfc1 c5 18.d5 Nd7 19.Bxc7 Kxc7 20.d6+ Kxd6 21.Rd1+ Ke6 22.Qxe4+ Kf7 23.Rxd7 Rxd7 24.Qf5+ Bf6 25.Qxd7+ Re7 26.Qd5+ Kf8 27.Qf5 Qxb2 28.Nd5 Re5 29.Nxf6 Rxf5 30.Nxh7+ Kg8 31.Rxb2 Kxh7 (with aftermath of settling in Diagram 3.)

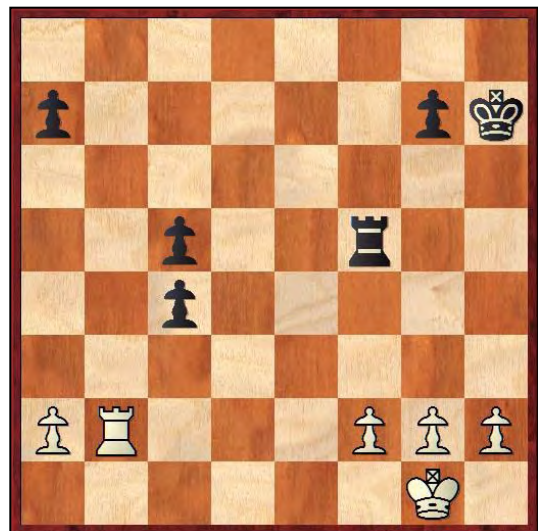


Diagram 3

32.Kf1 Kg6 33.Ke2 Kf6 34.Rd2 Rh5 35.h3 Rg5 36.g3 Re5+ 37.Kd1 g5 38.Kc2 Re1 39.Kc3 Ke5 40.Kxc4 Rc1+ 41.Kb3 Rf1 42.Kc3 Ke4 43.Kc4 Rc1+ 44.Kb3 Rb1+ 45.Kc3 Rf1 46.Kc4 Rc1+ 47.Kb3 Ra1 48.Kc4 Rc1+ 1/2-1/2



## Update on the Reversed Modern Opening

© Copyright 2015 by Colin James III. All rights reserved.

This is an update to previous articles here on **1.d3 e5 2.Nf3 Nc6 3.g3 d5 4.Bg2 Nf6 5.0-0** in Diagram 1.



Diagram 1

The chess program Houdini 4 Pro version 25 labels this opening as A07 for the Réti Opening: New York and Capablanca System. (The Chessbase interface also labeled it at one point as A29 for the English, four nights, kingside fianchetto which is mistaken due to the move order.)

Other top rated computer chess programs were not used because as Paul Covington commented, their ratings are within a margin of error. To verify similarity of ratings, I applied an N-by-M contingency test to ratings at [ComputerChess.org](http://ComputerChess.org) as of 02/2015 for Stockfish 3434, Komodo 3386, Houdini 3376, and Gull 3302. The results showed these ratings were not significantly different (Fischer  $P \leq 0.99$ ,  $df = 1$ ). The grosser standard deviation (SD) test scaled by 10 confirmed no difference at  $\pm 2\sigma$  for a 95% similarity.

For through ply 42, the result of the automatic analysis is drawn positions. However in these lines are many brilliant machine combinations to elicit a human, "ah ha".

The program with updates continues to run on a dedicated computer with backup power source. Any noteworthy changes for subsequent plys are duly reported here.

**A07.2015.02.02.132** [A07: Réti Opening: New York and Capablanca Systems]

**1.d3 e5 2.Nf3 Nc6 3.g3 d5 4.Bg2 Nf6 5.0-0** [Last book move. Main lines to ply 42 (Houdini 4 Pro x64B v 25):]

**[-0.00] 5...Be7**

**[-0.00] 5...Bd6** 6.c4 d4 7.e3 0-0 8.exd4 Nxd4 9.Nxd4 exd4 10.Bg5 h6 11.Bxf6 Qxf6 12.Nd2 Qd8 13.Re1 c6

14.Qc2 Be6 15.Re2 Re8 16.Nb3 Be7 17.Re4 Bf5  
18.Re5 Be6 19.Re4 Bf5 20.Rxd4 Qc7 21.c5 Rad8  
22.Re1 Bf6 23.Rxd8 Rxd8 24.Be4 Bh3 25.Qd2 Be6;

**[-0.00] 5...Bg4 6.c4**

(6.d4 exd4 7.Nxd4 Nxd4 8.Qxd4 c6 9.c4 dxc4  
10.Qxc4 Be7 11.Be3 0-0

(11...Be6 12.Qa4 0-0 13.Nc3 Qc7  
(13...Qd7 14.Bd4 Rfd8 15.e3  
h5 16.Rac1

(16.Ne2 Nd5

17.Rac1 Bg4)

16...h4 17.Ne4 Nxe4

18.Bxe4 a5 19.Rfd1 Bg4

20.Rd3 Re8 21.Bg2 hxg3

22.hxg3 Bf5 23.Rdd1)

14.Rad1 a6 15.Bd4 Rad8 16.Ne4  
Nxe4 17.Bxe4 f5 18.Bf3 f4 19.Qc2  
Bd6 20.e3 fxg3 21.fxg3)

12.Nc3 Be6

(12...Qa5 13.Qb3 Rfb8 14.Rfd1 Be6

15.Qa4 Qh5 16.Bf3 Ng4 17.h4 Qf5

18.Be4 Qe5 19.Bd4 Qh5 20.Bf3 Qf5

21.Be4 Qh5 22.Bf3)

13.Qa4 Qc7 14.Rad1 a6 15.Qc2 Rad8 16.Bd4  
Qa5 17.a3 Qh5 18.Ne4 Nxe4 19.Qxe4 Rfe8  
20.Bc3 Qg6 21.Qf4 Qc2 22.Rxd8 Rxd8 23.e3  
f6 24.Be4)

6...d4 7.b4

(7.h3 Bf5 8.Qa4 Bd7 9.Qb3

(9.e3 Bd6 10.Qc2 0-0 11.a3 Re8

12.b4 Bf5 13.Nh4 Bd7 14.Nf3 Bf5)

9...Be7 10.e3 0-0 11.exd4 exd4 12.Re1 Re8

13.Na3 a6 14.Bf4 h6 15.Qxb7 Rb8 16.Qxa6 g5

17.Bd2 Ra8 18.Qb7 Rb8 19.Qa6 Ra8)

7...Bxf3 8.Bxf3 Bxb4 9.Bg5 Rb8 10.a3 Be7 11.Bxf6  
Bxf6 12.Qa4 Qd7 13.Nd2 a6 14.Rfb1 Nd8 15.Qa5 Nc6  
16.Qa4 Nd8;

**[-0.00] 5...Be6 6.a3**

(6.c4 dxc4 7.Qa4 Bd6 8.dxc4 0-0 9.Bg5

(9.Nc3 h6 10.Nd2

(10.Rd1 Nd7 11.Nb5 Bc5

12.Qc2 Nb4 13.Qb3 Nc6

14.Nc3 Rb8 15.Qc2 f5 16.e3

e4 17.Nd4)

10...Rb8 11.a3 a5 12.Nde4 Nxe4

13.Nxe4 Be7 14.Nc3 Qd4 15.Nd5 b5

16.Nxe7+ Nxe7 17.Qxa5 Qxc4

18.Qb4

(18.Qe1 Nd5 19.Bd2 Rfd8

20.Ba5 Rd7 21.Rc1 Qd4

22.e4 Nb6 23.Bc3 Qc5

24.Bb4 Qd4 25.Bc3 Qc5)

18...Nf5 19.e3 Rfd8 20.Bd2 c5

21.Qa5 e4 22.Bc3 Ne7 23.Rfc1 Qd5

24.h3

(24.Bf1 Nc6 25.Qc7 Rbc8

26.Qf4 b4 27.axb4 cxb4

28.Bd4 Nxd4 29.exd4 Qxd4



- 30.Rxc8 Rxc8 31.Rc1 Qxb2  
32.Rxc8+ Bxc8 33.Qxe4  
Be6) )
- 9...h6 10.Bxf6 Qxf6 11.Nc3 Qe7  
(11...Rab8 12.Rac1 Qe7 13.Rfd1 Rfd8  
14.Ne1 Nd4 15.e3 Bd7 16.Qxa7 Nc6  
17.Qa4 Nd4 18.Qa7 Nc6)
- 12.Rad1 f5 13.Nh4 Qe8 14.Bd5 Rd8 15.Bxc6  
Qxc6 16.Qxc6 bxc6 17.Ng6 Rfe8 18.c5 Bxc5  
19.Nxe5 Rxd1 20.Rxd1 Bxa2 21.Nxc6 Bc4  
22.e3 a6 23.Ra1 g6 24.Ra5 Bb6 25.Ra4 Bd3  
26.Nb4 Bb5)
- 6...a5
- (6...Bd6 7.b4 a5 8.b5 Ne7 9.c4 c6 10.bxc6  
bxc6 11.cxd5 cxd5 12.Nc3 0-0 13.Nb5 h6  
(13...Nc6 14.Ng5 Bf5 15.Nf3 Be7  
16.Bb2 Nd7 17.Rb1 Rb8 18.Ba1 Be6  
19.Qc2 Rb6 20.Rfc1 Qb8 21.a4 d4  
22.Qd1 Nb4)
- 14.a4  
(14.Bb2 Rb8 15.a4 d4 16.Nd2 Bb4  
17.Nc4 Bxc4 18.dxc4 Bc5 19.Qd2  
Qb6 20.Rac1 Rfd8 21.Rb1 Bb4  
22.Qd3 Qe6 23.Nc7 Qd7 24.Nb5 Qe6  
25.Nc7)
- 14...Nc6 15.Bb2 Rc8 16.Rc1 Qd7 17.d4 e4  
18.Ne5 Bxe5 19.dxe5 Ng4 20.Rxc6 Rxc6  
21.h3 Nxf2 22.Rxf2 Bxh3 23.Nd6 Rb6 24.Bd4  
Rbb8 25.e3 Qg4 26.Qxg4 Bxg4)
- 7.c4 dxc4
- (7...d4 8.Qa4 Bd7 9.Qb5 Bd6 10.c5 Be7  
11.Qxb7 0-0 12.Nfd2  
(12.Qb3 a4 13.Qc2 Be6 14.Bg5 Bb3  
15.Qc1 Bd5 16.Nbd2 h6 17.Bxf6 Bxf6  
18.Ne1 Na5 19.Qd1 Bxg2 20.Nxg2  
Qd7 21.Rb1 Be7 22.Qc2 Qb5 23.Nf3  
Bf6 24.Nd2;  
12.Ng5 Rb8 13.Qa6 Ra8 14.Qb7 Rb8)
- 12...Ra7  
(12...Rb8 13.Qa6 Qe8 14.Ne4 Nh5  
15.Qc4 Be6 16.Qa6 Bd7 17.Qc4 Be6  
18.Qa6 Bd7)
- 13.Qb5 Qe8 14.b3 a4 15.b4 Na5 16.c6 Nxc6  
17.Qc4 Nb8 18.Qc2 c5 19.bxc5 Bc6 20.Bxc6  
Nxc6 21.Nc4 Bxc5 22.Nbd2 Qe6 23.Rb1 Be7  
24.Rb5 Nd5 25.Ne4 Nc7 26.Rb6 Nd5 27.Rb5  
Nc7 28.Rb6 Nd5 29.Rb5)
- 8.Qa4 Bd6 9.dxc4 0-0 10.Nc3 h6 11.Rd1 Qe8 12.Be3  
Ng4 13.Bb6 f5 14.h3 e4 15.hxg4 exf3 16.exf3 fxc4  
17.f4 Bxf4 18.gxf4 cxb6 19.Rd6 Qf7 20.Rxe6 Nd4  
21.Re4  
(21.Rxb6 Qxf4 22.Ne4 g3 23.fxc3 Ne2+  
24.Kh2 Nxg3 25.Nxg3 Qh4+ 26.Kg1 Qd4+  
27.Kh2 Qh4+ 28.Kg1 Qd4+)
- 21...Nf3+ 22.Bxf3 gxf3 23.Kh2 Qg6 24.Rg1 Qh5+  
25.Kg3 Qg6+ 26.Kh2 Qh5+ 27.Kg3 Qg6+ 28.Kh2  
Qh5+;
- [+0.03] 5...a5 6.c4
- (6.d4 e4 7.Ne5 Bd6 8.Nxc6 bxc6 9.c4 0-0  
10.Nc3 Ba6 11.c5 Be7 12.Bh3 Bc8 13.Bxc8  
Qxc8 14.f3 Re8 15.Kg2 Qd7 16.b3 h6 17.Qc2  
Nh7 18.Be3 exf3+ 19.Rxf3 Bf6 20.Rd1 Qe6  
21.h4 Nf8 22.Rdf1 Qg4 23.Rf4 Qh5 24.Rf5  
Qg4 25.R5f4  
(25.R1f4 Qg6 26.h5 Qh7 27.Rf3 Ne6  
28.Qd3)
- 25...Qh5)
- 6...d4 7.e3 Bc5 8.exd4 Bxd4 9.Nc3 0-0 10.Re1  
(10.Nd5 h6 11.Nxd4 Nxd4 12.Be3 c6 13.Bxd4  
exd4 14.Nxf6+ Qxf6 15.Qb3 Rb8 16.Rfe1 Bf5  
17.c5 Rfd8 18.Rad1 Rf8 19.a3 Be6 20.Qa4 b6  
21.Rd2 bxc5 22.Qxc6 Rfc8 23.Qa4 Qd8  
24.Rxe6 fxe6;  
10.a3 Bf5 11.Nxd4 Qxd4 12.Be3 Qd7 13.Bg5  
Qxd3 14.Rc1 Bg6 15.Nd5 Nd4 16.Ne7+ Kh8  
17.Re1 Rad8 18.Bxb7 Rfe8 19.Nxg6+ Qxg6  
20.Be3 Qf5 21.g4 Qg6 22.Bg2 c5 23.Bd2 e4)
- 10...Bg4 11.h3 Bxf3 12.Qxf3 h6 13.Rb1 Nb4 14.Rd1  
Re8 15.a3 Nc6 16.Kh2 a4  
(16...Ra6 17.Be3 a4 18.Qe2 Nd7 19.Nb5 Nc5  
20.Bd5 Bxe3 21.fxe3 Qe7 22.Qh5 Nd8 23.Nc3  
c6 24.Be4 Nde6 25.Qxe5 Ng5 26.Qxe7 Rxe7)
- 17.Be3 Re6 18.Qe2 Nd7 19.Qg4 Nf6 20.Qf3 Bxe3  
21.Qxe3 Qd7 22.Qc5 Qd8;
- [+0.08] 5...h6 6.c4
- a) 6.Be3 Bd6 7.c4 d4;  
b) 6.Nbd2 Bc5  
(6...e4 7.Ne1  
(7.dxe4 dxe4 8.Ne1 Bc5 9.c3  
e3 10.fxe3 Bxe3+ 11.Kh1  
Bb6)
- 7...Bc5  
(7...Bg4 8.f3 Bc5+ 9.Kh1  
exf3 10.exf3 Bd7 11.Nb3  
Bb6)
- 8.dxe4  
(8.c4 e3)
- 8...dxe4 9.c3  
(9.e3)
- 9...e3 10.Nb3)
- 7.c3  
(7.Re1 Bxf2+ 8.Kxf2 Ng4+ 9.Kg1)
- 7...Bb6 8.Ne1 0-0;  
c) 6.Re1 Be6 7.Be3;
- 6...dxc4  
(6...d4)
- 7.dxc4 Bd6  
(7...Qxd1 8.Rxd1 Bc5 9.Nbd2 Be6 10.Nf1  
(10.b3 e4 11.Ne1 Bd4 12.Rb1 0-0-0  
13.Nc2 Bf5 14.e3 Bc3 15.Bb2) )
- 8.Nc3 0-0 9.Qc2 Qe7  
(9...Qe8 10.e4 Bg4 11.Be3 Bxf3 12.Bxf3 Nd4  
13.Qd1 Rd8 14.Nd5 Nh7 15.Bxd4 exd4 16.c5  
Be5 17.Nb4 d3 18.Nxd3 Ng5 19.h4 Ne6  
20.Qe2 Nd4 21.Qd1 Ne6 22.Qe2)
- 10.Be3 Rd8 11.Rfd1 Be6 12.Nh4 Bxc4 13.Nf5 Qd7

14.Ne4 Qxf5 15.Nxf6+ Qxf6 16.Qxc4 Nd4 17.Bxd4  
exd4 18.Bxb7 Rab8 19.Bf3 Rxb2 20.Qxd4 Qxd4  
21.Rxd4 Kf8 22.Kg2 g6 23.h4 Be7 24.Rc4 c5 25.h5 g5  
26.a3 a5;

**6.c4 0-0 7.cxd5 Nxd5 8.Nc3 Be6 9.Re1**

[9.d4 exd4 10.Nb5 d3 11.Qxd3 Ncb4 12.Qb1 c5 13.Nc3  
Nxc3 14.bxc3 Nd5 15.Bd2 Qc7 16.e4 Nb6 17.Ng5  
Bxg5 18.Bxg5 Bxc4 19.Rc1 Rfe8 20.Be3 Rxe3 21.fxe3  
Re8 22.a4 Ba6 23.Qb3 Nd7 24.Rc2 b6 25.Rd1 Nf6  
26.Bf3;  
9.Bd2 h6

(9...Qd7 10.Rc1 Rfe8 11.a3 Rad8 12.b4 a6  
13.Ng5 Bxg5 14.Bxg5 Rc8 15.Ne4 b6 16.Bd2  
h6 17.Re1 Rcd8 18.Qa4 Nd4 19.Qxd7 Rxd7  
20.Nc3 Ne7 21.Rb1 Nb3 22.Be3 Nd4 23.Rbc1)

10.Rc1

a) 10.a3 Nf6 11.Rc1 Qd7 12.Qa4  
(12.Qc2 Rfd8  
(12...Rad8 13.b4 a6 14.Rfd1  
Rfe8 15.Ne4 Nxe4 16.dxe4  
Qc8 17.Bc3 Rxd1+ 18.Rxd1  
Bd6 19.Bf1 Rd8 20.e3 Bg4  
21.Kg2 Qe6)

13.Be3 Qe8 14.Na4 Bd5 15.Nc3 Be6  
16.Na4)

12...Rfe8

(12...Rab8 13.Rfe1 Rfd8 14.Ne4  
Nxe4 15.Qxe4 Bd5 16.Qe3 Bf6  
17.Bc3 Re8 18.Qc5 Rbd8 19.Nd2  
Bxg2 20.Kxg2 Bg5 21.Qb5 Rb8  
22.h4

(22.e3 a6 23.Qc4)

22...Bxh4 23.gxh4 Qg4+ 24.Kf1  
Qh3+ 25.Kg1 Qg4+ 26.Kf1)

13.Be3 a6 14.Nd2 Nd4 15.Qxd7 Nxd7  
16.Bxb7 Rab8 17.Bxa6 Rxb2 18.Nc4 Bxc4  
19.Bxc4 Nb6 20.Bxd4 exd4 21.Nb5 c5  
22.Rfe1 Bf8 23.Kf1 Nxc4 24.dxc4 Ra2 25.Rb1  
Re5;

b) 10.Na4 Qd7 11.Rc1 Rfd8 12.Nc5 Bxc5  
13.Rxc5 Qd6 14.Qc1 a5 15.a3 a4 16.Rc4 Nde7  
17.Bb4 Nxb4 18.Rxb4 b6 19.Nd2 Bd5  
20.Bxd5 Nxd5 21.Rh4 Qe6 22.Qc2 Qe8

23.Ne4 c6 24.Rc1 c5 25.Rh5 Qe6 26.Qc4;  
10...Qd7

(10...Re8 11.Ne4 Qd7 12.Nc5 Bxc5 13.Rxc5  
Qd6 14.Qc2 Ndb4 15.Bxb4 Nxb4 16.Qc3 Nd5  
17.Qc2 Nb4 18.Qc3;  
10...Nf6 11.Na4 Qd7 12.Bc3 b5 13.Nxe5 Nxe5  
14.Bxe5 bxa4 15.Rxc7 Qb5 16.d4 Rae8 17.Bc6  
Qxb2 18.Bxe8 Rxe8 19.Qxa4 Kf8 20.Qa6 Kg8  
21.Qa4 Kf8 22.Qa6 Kg8 23.Qa4 Kf8)

11.a3

(11.Na4 Rfd8 12.Nc5 Bxc5 13.Rxc5 Qd6  
14.Qc1 a5 15.a3 a4 16.Rc4 Nde7 17.Bb4 Nxb4  
18.Rxb4 b6 19.Nd2 Bd5 20.Bxd5 Nxd5 21.Rh4  
Qd7 22.Qc2 c5 23.Nc4 Qc7 24.Nd2 Qd7  
25.Nc4)

11...Rad8 12.Qc2 a6 13.b4 f5 14.Na4 Bf7 15.Rfe1 Qe6  
16.e3 Bh5 17.Nc5 Bxc5 18.bxc5 Qf6 19.Qb3 Bf7  
20.Qc2]

**9...a6 10.a3 h6 11.Bd2 Nf6 12.Rc1 Qd7 13.Qc2 Rfd8 14.Nd1  
Nd5 15.Nc3 Nf6 16.Nd1 ½-½** See Diagram 2.



Diagram 2



## Recent Advances in the Nimzo-Larsen A01

© Copyright 2015 by Colin James III All rights reserved.

The book moves of A01 are **1.b3 e5 2.Bb2 Nc6 3.e3 Nf6 4.c4 d5** in Diagram 1.



Diagram 1

The main continuation is **5.cxd5 Nxd5** (+0.00) in Diagram 2.



Diagram 2

(Three other variations are not favorable for Black as: 5...Qxd5 (+0.10); 5...Nb4 (+0.55); and 5...Ne7 (+0.74).

+0.10 5...Qxd5 6.Nc3 Qd7 7.a3 Be7 8.Qc2 0-0 9.Nf3 a6 10.b4 Rd8 11.Rc1 h6 12.Be2 Qf5 13.Qxf5 Bxf5 14.Na4 Nd7 15.d3 e4 16.dxe4 Bxe4 17.0-0 Nf8 18.Nc3 Bf6 19.Rfd1 Bf5 20.Ba1 Ne6 21.Nd5 Bxa1 22.Rxa1 Be4 23.Nc3 Bc2 24.Rxd8+ Rxd8 25.g4 a5 26.b5 Ne7 27.Bc4 Bh7 28.Kg2 g5 29.Bxe6 fxe6;

+0.55 5...Nb4 6.a3 Nbx5 7.Bxe5 Bd6 8.Bxd6 Qxd6 9.Be2 Bf5 10.Nf3 Ne4 11.0-0 0-0 12.d4 Qe7 13.Qe1 Rfe8 14.Nbd2 Nec3 15.Bc4 c6 16.Ne5 f6 17.Ndf3 Ne4 18.Nd3 Qf7 19.Nf4 g5 20.Nxd5 cxd5 21.Bd3 Rac8 22.Nd2 Kg7 23.Nxe4 dxe4 24.Bc4 Be6 25.Bxe6 Qxe6;

+0.74 5...Ne7 6.Bb5+ Bd7 7.Bxd7+ Qxd7 8.Bxe5 Nfxd5 9.Nf3 0-0-0 10.0-0 Kb8 11.Nc3 f6 12.Bg3 Nf5 13.Nxd5 Qxd5 14.Rc1 Nxc3 15.hxc3 Qa5 16.Nd4 Bd6 17.Ne6 Rd7 18.d4 Re8 19.Nc5 Bxc5 20.Qh5 g6 21.Qxc5 Re5 22.Qc4 c6 23.Rc2 h5 24.Rb1 f5 25.b4 Qa4 26.Rb3 Qb5 27.Qxb5 Rxb5.)

(+0.00) 6.a3 Be6 7.Nf3 f6 8.Bb5 Qd7 9.d4 e4 10.Nfd2 a6 11.Bc4 f5 12.Nc3 0-0-0 13.0-0 Kb8 14.Qc2 h5 15.Nxd5 Bxd5 16.Rac1 Qe6 17.Bxd5 Qxd5 18.Qc4 Be7 19.b4 Rh6 20.Qc2 h4 21.h3 Rg6 22.Nc4 Bf6 23.Na5 Be7 24.Nc4 Bf6 ½-½, ending in Diagram 3.



Diagram 3

The lesson learned from the Nimzo-Larsen A01 **1.b3 e5 2.Bb2 Nc6 3.e3 Nf6 4.c4 d5 5.cxd5** is that the only hope of equality for Black is the continuation as **5...Nxd5**. This means the Nimzo-Larsen A01 is an effective opening for White. It also bears resemblance to the Polish opening, A00 1.b4.

From a theoretical positional standpoint, the opening shows the utility of the fianchetto bishop to slice the board. This is singly on either or both sides and also dually as pairs on one side with bishops at a2 b2, h2 g2, a7 b7, or h7 g7. LM Brian Wall plays bishops dually with good effect.

The analysis was performed by Houdini x64B version 28 with 9.2 GB hash table uncleaned on 6 processors at about 10,000 kN/s through depth 36. Subsequent higher depths may change the lines slightly but not the advantage results.



# The Chess Detective®



## Perpetual Check Problems

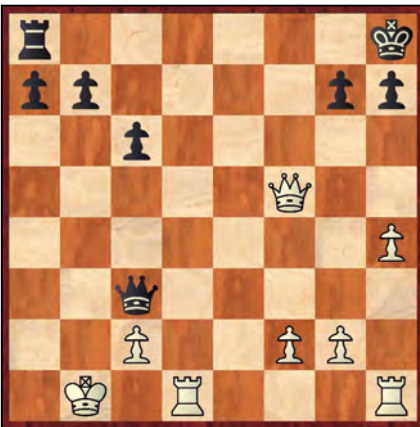
by NM Todd Bardwick

(Reprinted with permission of the Author, the United States Chess Federation & Chess Life magazine.)

In the January 2015 edition of the *Colorado Chess Informant*, we looked at some examples of perpetual check where the player who was losing the game found a way to salvage a draw.

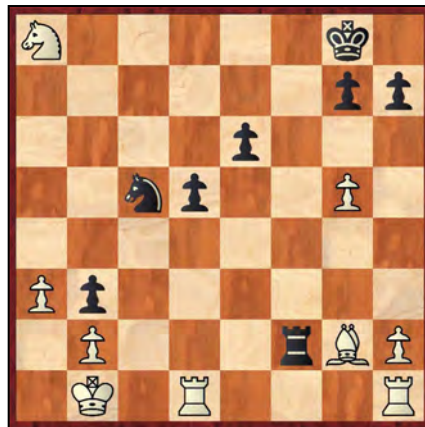
Now it's your turn to find the perpetual check. Better throw everything you can at your opponent's king!

(Answers are on the next page.)



#1

Position after 24.Qxf5 (B)  
Black to move.



#2

Position after 33.Nxa8 (R)  
Black to move.



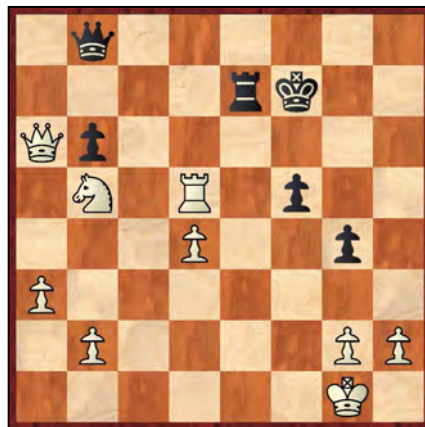
#3

Position after 42...Nxe5 (P)  
White to move.



#4

Position after 27...dxc7 (P)  
Black to move.



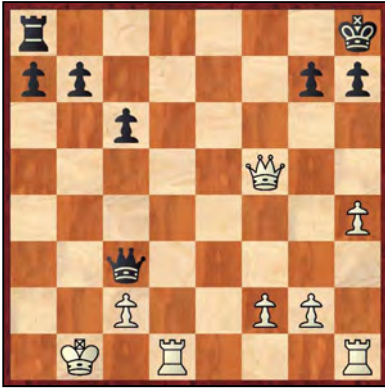
#5

Position after 36.Rxd5 (N)  
Black to move.

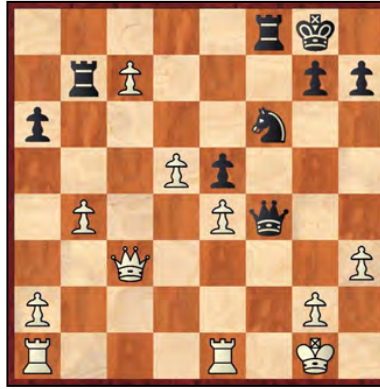


#6

Position after 43...Nhx4 (P)  
White to move.

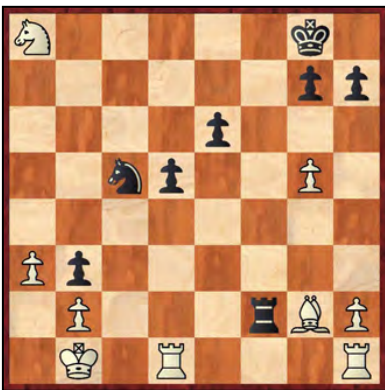


**#1** This game was between Peter Leko and Vladimir Kramnik from Wijk aan Zee, Netherlands, in 2008. Down a rook to a pawn, Black played **24...Qb4+ 25.Ka2 Qa4+ 26.Kb2 Qb4+ 27.Kc1 Qa3+ 28.Kb1 Draw.** (28.Kd2 Rd8+ 29.Ke2 Qe7+ 30.Kf3 Rf8 31.Qxf8 Qxf8+ and Black has an advantage with his queenside pawn majority).



**#4** This position occurred in Stockholm, Sweden, in 1952 between Wolfgang Unzicker and Yuri Averbakh. White has some dangerous passed pawns for a knight. Black takes advantage of White's exposed king position by playing **27...Rxc7** (27...Ng4 28.hxg4 Rxc7 and White has a small advantage) **28.Qxc7 Ng4! Draw.** Black threatens

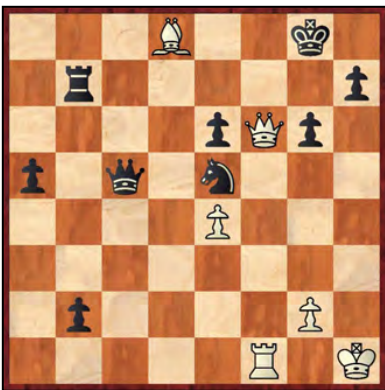
29...Qh2 mate. After 29.hxg4, Black can repeat the position by playing 29...Qf2+ 30.Kh2 Qh4+ 31.Kg1 Qf2+.



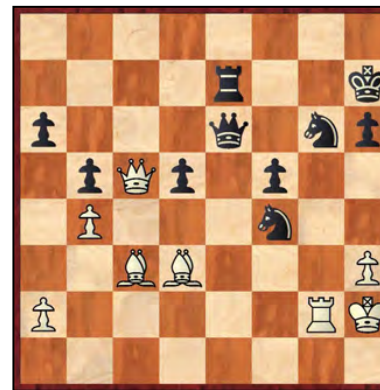
**#2** Black is way behind in material, but has a rook on the 7<sup>th</sup> and an advanced pawn on b3. Black forces a perpetual check by playing **33...Na4 34.Rd3 Draw.** Black can play 34...Rxb2+ 35.Kc1 Rc2+ 36.Kb1 (36.Kd1? Nb2+ 37.Ke1 Nxd3+ 38.Kd1 Nf2+ 39.Ke1 b2 and Black is winning) 36...Rb2+. This game was between Peter Svidler and Rustam Kasimdzhanov in 2005 in Potrero de los Funes, Argentina.



**#5** Black is way behind in material and finds a way to sacrifice his rook to draw out the White king for the perpetual check by playing, **36...Re1+!** The game continued, **37.Kf2 Qf4+ 38.Kxe1 Qc1+ 39.Ke2 Qxb2+ 40.Kd3 Qb1+ 41.Kc3 Qc1+ 42.Kb4 Qb1+ 43.Kc4 Qf1+ Draw.** White's king cannot escape the annoying checks. This game was between Kiril Georgiev and Smbat Gariginovich from the 1985 Bosna GM Tournament.



**#3** This position was between Garry Kasparov and Vladimir Tukmakov in the USSR in 1982. Black is about to promote his b-pawn. White has nice attacking chances against Black's king, but decides he doesn't have enough force to break in. To clear d8 for the perpetual check, Kasparov plays **43.Bc7! Rxc7 44.Qd8+ Kg7 45.Qf6+ Draw.** (If 45...Kh6, then 46.Qh4+).



**#6** White is behind a couple pawns and finds a clever perpetual check by sacrificing his bishop and queen to force a draw. He played, **44.Bxf5! Qxf5 45.Qxe7+! Nxe7 46.Rg7+ Kh8 47.Rg1+ Draw.** This is from a game between John Littlewood and Alan Perkins in Morecambe, England in 1975.



*Todd Bardwick is the author of  
"Chess Strategy Workbook: A Blueprint for Developing the Best Plan."  
He can be reached at [www.ColoradoMasterChess.com](http://www.ColoradoMasterChess.com)*

## Colorado Springs Open

by Chief Tournament Director  
Richard "Buck" Buchanan

The Colorado Springs Open returned to the Manitou Springs City Hall on March 7 & 8, and was blessed with good weather and a turnout of 53. We had players from all over, including visitors from New Mexico, Nebraska, and Nevada. Family groups were in abundance: four Williams youngsters as well as the Hermans and Needhams and the usuals from the Alter, Langseth, Carson-Martinez, and McConnell families.

Mark Krowczyk astonished us all by defeating both LM Brian Wall and Chris Peterson and then leaving the tournament before the last round. This allowed Earle Wikle and Las Vegas expert Greg Cottle to win the tournament with scores of 4.5 points. Mark's 4 points still won him some money along with Paul Baxter with the same score. There was discussion on whether Mark was eligible for a prize, but I found a line in the rule book that says, "Unless the director decides otherwise, players who fail to complete the tournament are not eligible for prizes," and in this case the director certainly decided otherwise. Other prize winners were Jeff Baffo, David Hufnagel, Deanna Alter, Andrew Lin, Alex Mekonnen, Mike Madsen, Jesse and Teah Williams, Mihaly Toth, and Dimitri Lopez of New Mexico.

Many of the tournament's games showed unbalanced material: e.g., a rook against a piece or two, queen vs rooks or a rook and piece(s). This led to hard fought, unpredictable games.

A few from the tournament took the chance to ride a ways up Pikes Peak on the Cog Railroad. Like last year, *Daylight Saving Time* started Sunday morning, forcing the players out of bed an hour earlier. But I am pleased to say that there were no Round 4 forfeits! In fact, more games were selected for publication from round 4 than any other round! Good work, folks! My only sad moment of the tournament was when I announced that the *Spice of Life Coffee House*, a

longtime supporter of Manitou Springs chess, has gone out of business.

We will be back in City Hall for the Pikes Peak Open in August and then return to the Art Center across the street for the Winter Springs Open.

**Richard Brown** (1618)  
**Greg Cottle** (2015)

1.c4 e6 2.d4 d5 3.cxd5 exd5 4.Nc3 c6 5.Bf4 Nf6 6.e3 Bd6 7.Bxd6 Qxd6 8.Nf3 Bg4 9.Bd3 Nbd7 10.h3 Bh5 11.Qc2 0-0



12.0-0 Rfe8 13.Ne2 Rac8 14.Nf4 Bxf3 15.gxf3 c5 16.dxc5 Nxc5 17.Rac1 g6 18.Rfd1 Ne6 19.Qxc8 Rxc8 20.Rxc8+ Kg7 21.Ne2 Qd7 22.Rdc1 Ng5 23.Nf4 Nxf3+ 24.Kg2 Ne1+ 25.Kg3 Nxd3 26.Nxd3 Qf5 27.Nf4 g5 28.Ne2 Ne4+ 0-1

**Alexander Freeman** (1832)  
**Jason Lee** (1393)

1.d4 d5 2.c4 e6 3.Nc3 Nf6 4.Bg5 Be7 5.Nf3 Nbd7 6.e3 c6 7.Rc1 0-0 8.Bd3 dxc4 9.Bxc4 b5 10.Bd3 Bb7 11.0-0 a6 12.Qc2 h6 13.Bh4 Rc8 14.Qe2 Re8 15.Rfd1 Qc7 16.Bg3 Qb6 17.Ne5 Nxe5 18.dxe5 Nd5 19.Ne4 c5 20.Qg4 c4 21.Bb1 Bc6 22.h4 Rcd8 23.h5 Kf8 24.Bh4 Bxh4 25.Qxh4 Qc7 26.Nd6 Re7 27.Rd4 Red7 28.Rg4 f6 29.exf6 Nxf6 30.Rxg7 Kxg7 31.Qg3+ Kf8 32.Qg6 Rxd6 33.Qxf6+ Kg8 34.Qg6+ Qg7 35.Qxg7+ Kxg7 36.Bg6 Rd1+ 37.Rxd1 Rxd1+ ... 0-1

**Sullivan McConnell** (1391)  
**Jack Woehr** (1823)

1.e4 g6 2.d4 Bg7 3.Nc3 d6 4.f4 Nf6 5.Nf3 0-0 6.Bd3 Na6 7.a3 c5 8.d5 Nc7 9.0-0 e6 10.dxe6 fxe6 11.e5 Nfd5 12.exd6 Qxd6 13.Ne4 Qe7 14.Nfg5 Bd7 15.c4 Bd4+ 16.Kh1 Ne3 17.Bxe3 Bxe3

18.g3 Bc6 19.Qg4 Rad8 20.Qe2 Bd4 21.Nf3 Qg7 22.Rab1 Bxb2 23.Rxb2 Rxd3 24.Qxd3 Qxb2 25.Nxc5 e5 26.Ne4 exf4 27.gxf4 Rxf4 28.Qd8+ Ne8 29.Neg5 Qe2 30.Kg1 Rg4+ 0-1

**Mark Krowczyk** (1901)  
**Griffin McConnell** (1354)

1.d4 d5 2.Nc3 Nf6 3.Bg5 Ne4 4.Bh4 Nc6 5.Nf3 Bg4 6.e3 Qd6 7.Be2 Qb4 8.0-0 Nxc3 9.bxc3 Qxc3 10.Rb1 b6 11.Rb5 Nb4 12.Qe1 Qxe1 13.Rxe1 e6 14.Rxb4 Bxb4 15.Bb5+ Kf8 16.c3 Bxc3 17.Rc1 Bxf3 18.Rxc3 Bh5 19.Rxc7 h6 20.Be7+ Kg8 21.h3 Kh7 22.Ba6 f5 23.f3 Rhe8 24.Kf2 Kg8 25.g4 fxg4 26.hxg4 Bg6 27.Kg3 h5 28.gxh5 Bxh5 29.Kf4 Kh8 30.Bb7 Rab8 31.e4 dxe4 32.fxe4 a5 33.Ke5 Bf7 34.a4 Rg8 35.Ba3 Be8 36.Kxe6 Bxa4 37.e5 g5 38.Kf6 Rxb7 39.Rxb7 b5 40.d5 g4 41.e6 g3 42.Bb2 Rf8+ 43.Kg6+ 1-0

**Tom Needham** (1282)  
**Tim Brennan** (1818)

1.e4 a6 2.d4 b5 3.Nf3 Bb7 4.Bd3 Nf6 5.e5 Nd5 6.a3 e6 7.0-0 d6 8.Re1 Nd7 9.b3 h6 10.Be4 Rb8 11.Qd3 g5 12.Bg6 Nf4 13.Bxf4 gxf4 14.Bh5 Be7 15.exd6 cxd6 16.Rxe6 Nf6 17.Qf5 Nxe5 18.Qxh5 Bxf3 19.gxf3 Rg8+ 20.Kf1 Rg5 21.Rxe7+ Qxe7 22.Qxh6 Kd7 23.Nd2 Rbg8 0-1

**Tim Brennan** (1818)  
**LM Brian Wall** (2272)

1.e4 a6 2.d4 e6 3.c4 c5 4.Nf3 cxd4 5.Nxd4 Bd6 6.Nc3 b6 7.Bd3 Bb7 8.f4 Bc7 9.Qe2 d6 10.Be3 Nf6 11.g4 d5 12.cxd5 exd5 13.exd5 0-0 14.0-0 Re8



15.Nc2 Bxf4 16.Qf2 Bxe3+ 17.Nxe3 Nfd7 18.Rhf1 Ne5 19.Bc2 Nbd7 20.Qf5

g6 21.Qf4 Qh4 22.h3 Rf8 23.Kb1 Rab8  
24.Bb3 Kg7 25.Ne4 h6 26.Ng2 Qd8  
27.g5 h5 28.Nf6 b5 29.Qe4 Nc4 30.Nf4  
Nxf6 31.gxf6+ Kh6 32.Bxc4 bxc4  
33.Qe3 Re8 34.Ne6+ Kh7 35.Nxd8 Rxe3  
36.Nxf7 Rf8 37.Ng5+ Kh6 38.h4 Bc8  
39.f7 Kg7 40.Rdel Bf5+ 41.Kc1 Rd3  
42.Ne6+ Kxf7 43.Nxf8 Kxf8 44.Rd1 Ke7  
45.Rxd3 cxd3 46.Kd2 Kd6 47.Rf4 Kxd5  
48.Ra4 Ke5 49.Rxa6 Kf4 50.Ra4+ Kg3  
51.Rd4 g5 52.hxg5 h4 ½-½

**Gunnar Andersen** (2198)

**Clifton Ford** (1815)

1.e4 e6 2.d4 d5 3.e5 c5 4.c3 Nc6 5.Nf3  
Bd7 6.a3 f6 7.b4 fxe5 8.b5 Nxd4 9.Nxe5  
Nf5 10.Qh5+ g6 11.Nxg6 Nf6 12.Qh3  
Rg8 13.Nxf8 Rxf8 14.Bd3 Qe7 15.0-0



0-0 16.Re1 Ne4 17.Bxe4 dxe4 18.Nd2  
e3 19.fxe3 Bxb5 20.a4 Bc6 21.e4 Rg8  
22.Re2 Nh4 23.Qe3 Rg6 24.Ba3 Qg7  
25.g3 b6 26.Rf2 Rg4 27.Raf1 Qd7  
28.Bc1 Bxa4 29.Qe2 Rg7 30.Qa6+ Kb8  
31.Nc4 Ng6 32.Nxb6 Qb5 33.Qxa4 axb6  
34.Qxb5 1-0

**Anthea Carson** (1806)

**Chris Peterson** (2187)

1.d4 Nf6 2.Nf3 g6 3.c4 Bg7 4.Nc3 d5  
5.e3 0-0 6.Be2 c6 7.0-0 Bg4 8.Qb3 Qb6  
9.c5 Qc7 10.Bd2 Ne4 11.Rfd1 Nd7 12.h3  
Bf5 13.Nxe4 dxe4 14.Nh4 Nf6 15.Nxf5  
gxf5 16.Bc4 e6 17.Qc2 Kh8 18.b4 Nd5  
19.Rab1 Rg8 20.Bxd5 cxd5 21.b5 Rac8  
22.Qa4 Bf6 23.b6 axb6 24.Rxb6 Bh4  
25.Be1 f4 26.Qb3 fxe3?? (26...f3 27 g4  
Qd8!! 28 Rxb7 Rxd4+ 29 hxg4 Qg5  
mating - note by Chris.) 27.Qxe3 Rg6  
28.f4 Be7 29.Rdb1 Reg8 30.R1b2 Rb8  
31.a4 Rgg8 32.Ba5 Bh4 33.c6 Rbc8  
34.Ra6 Qd6 35.Bb4 Qc7 36.Ba5 Qd6  
37.Bb4 Qb8 38.Ba5 bxa6 39.Rxb8 Rxb8  
40.Qc1 Bf6 41.Bc3 Rgc8 42.Bb2 Rb6

43.c7 Rb7 44.Qf1 Rxb2 45.Qxa6 Rxc7  
46.a5 Rcc2 47.Qa8+ Kg7 48.Qa7 Rxd2+  
49.Kf1 (Black won on time.) 0-1

**David Hufnagel** (1727)

**Mark Krowczyk** (1901)

1.d4 e6 2.c4 f5 3.Nf3 Nf6 4.g3 Be7 5.Bg2  
0-0 6.0-0 d6 7.Nc3 Nc6 8.Re1 Qe8  
9.Nb5 Bd8 10.Bg5 Qg6 11.Qc1 a6  
12.Nh4 Qe8 13.Bxf6 axb5 14.Bxd8 Qxd8  
15.d5 Ne5 16.f4 Nxc4 17.dxe6 d5 18.b3  
Nb6 19.Qc5 Bxe6 20.Qxb5 c6 21.Qd3  
Nd7 22.Qc2 g5 23.fxg5 Qxg5 24.e3 Qg7  
25.Bh3 Ne5 26.Bxf5 Bxf5 27.Nxf5 Nf3+  
28.Kg2 Rxf5 0-1

**Atharva Vispute** (1612)

**Alexander Freeman** (1832)

1.d4 d5 2.c4 c6 3.Nc3 Nf6 4.Nf3 dxc4  
5.a4 e6 6.e3 Nbd7 7.Bxc4 Bb4 8.0-0 0-0  
9.Qc2 Qa5 10.Bd3 Re8 11.Ne4 Qh5  
12.Bd2 Bxd2 13.Nfxd2 Nd5 14.Ng3 Qh4  
15.Nf3 Qh6 16.Qd2 N7f6 17.Ra1 a5  
18.Ne5 Qh4 19.h3 Nb4 20.Bb1 Rd8  
21.Kh2 Qg5 22.f4 Qh4 23.Qe2 h5 24.f5  
Qg5 25.fxe6 Bxe6 26.Bf5 h4 27.Ne4  
Nxe4 28.Bxe4 Nd5 29.Rce1 Nb6 30.Rf4  
f6 31.Nf3 Qg3+ 32.Kh1 Nxa4 33.Rxh4 f5  
34.Bc2 Nxb2 35.Bxf5 Bxf5 36.Qxb2 b5  
37.Qb3+ Kf8 38.Rf4 g6 39.Qe6 Kg7  
40.Qe5+ Kg8 41.Rxf5 gxf5 42.Qxg3+ ...  
1-0

**Justin Alter** (1975)

**Gunnar Andersen** (2198)

1.d4 Nf6 2.c4 g6 3.Nc3 Bg7 4.Bg5 d6  
5.Nf3 h6 6.Bh4 0-0 7.e3 c5 8.d5 Qa5  
9.Bxf6 Bxf6 10.Qd2 Nd7 11.Bd3 a6 12.0  
-0 b5 13.e4 bxc4 14.Bxc4 Rb8 15.Rab1  
Bg7 16.Qc2 Rb4 17.Nd2 Ne5 18.a3 Rxc4  
19.Nxc4 Nxc4 20.Rfc1 Bd7 21.b4 Qc7  
22.Qa2 Ne5 23.bxc5 Qxc5 24.Nb5 axb5  
25.Rxc5 dxc5 26.Qe2 Ra8 27.Qe3 Rc8  
28.h3 Nc4 29.Qd3 Ra8 30.Rb3 Bb2  
31.Qb1 Bxa3 32.Rxb5 Bxb5 33.Qxb5  
Nd6 34.Qc6 Rc8 35.Qd7 Rb8 36.Qxe7 c4  
37.e5 Nb5 38.Qf6 Bb2 39.Qe7 Ba3  
40.Qf6 Bb2 41.Qe7 ½-½

**Chris Peterson** (2187)

**Paul Baxter** (1897)

1.d4 Nf6 2.Nf3 e6 3.g3 b6 4.Bg2 Bb7 5.0  
-0 Be7 6.b3 0-0 7.Bb2 d5 8.Nbd2 Nbd7  
9.h3 Ne4 10.Nxe4 dxe4 11.Nd2 f5  
12.Nc4 Bf6 13.e3 Ba6 14.f3 exf3 15.Qxf3  
Rc8 16.Qc6 Re8 17.Rad1 Rb8 18.d5  
Bxc4 19.Bxf6 Qxf6 20.Qxc4 Ne5

21.Qxc7 Rbc8 22.Qd6 Rxc2 23.dxe6  
Rcc8 24.Qd4 Re7 25.Qf4 Rf8 26.Rd6  
Ng6 27.Qd4 Qg5 28.Kh2 h5 29.h4 Qf6  
30.Bd5 Kh7 31.Bc4 Ne5 32.Bd5 Rc8  
33.Kh1 Rf8 34.Rxf5 1-0

**Rhett Langseth** (2069)

**Jack Woehr** (1823)

(Notes by Jack Woehr)

1.Nf3 g6 2.d3 Bg7 3.c3 Nf6 4.Nbd2 0-0  
5.e4 d6 6.Be2 e5 (I do not recommend  
this symmetrical setup.) 7.0-0 c6 8.Re1  
Nbd7 9.Nf1 Re8 10.Ng3 Qc7 11.Bd2 Nf8  
12.Qc1 d5! 13.h3 Ne6 14.Bf1 dxe4  
15.dxe4 Nf4 16.Qc2 Be6 17.Ng5 h6  
18.Nxe6 Nxe6 19.a4 h5 20.Bc4 h4  
21.Nf1 Nh5 22.Nh2 Nh4 23.Nf3 Bf6  
24.Rad1 Rad8 25.Be3 b6 26.Kh2 Qe7  
27.b4 Kg7 28.Qb3 Ng5 29.Nxg5 Bxg5  
30.Rf1 Ne6 31.Bxe6 Rxd1 32.Rxd1 Bxe3  
33.Bg4 Bg5 (23... Bxf2, D'oh!) 34.Qc4  
Qf6 35.Kg1 Rd8 36.Bd7 Bf4 37.Kf1 Bg3  
38.f3 Qf4 (Desperately seeking entry.)



39.Ke2! (The exchange sac was  
threatened, winning.) 39...Qf6 (Any better  
ideas? This is sad.) 40.Qa6 Bf4 41.Qxa7  
Qg5 42.Qxb6 Qxg2+ 43.Qf2 Qg5 (Dead  
lost but very calm and enjoying watching  
my high-expert opponent become  
flustered as time grows short. The game  
took place between 7:00 and 11:00  
Saturday evening and we were both  
tired.) 44.Bxc6 Rxd1 45.Kxd1 Qd8+  
46.Kc2 Qc8 47.b5 Qxh3 48.a5? (48.b6!  
apparently winning. Now it's drawn.)  
48...Qh1! (Leading to a game of ring-  
around-the-rose with the c-pawn as the  
maypole.) 49.a6 Qc1+ 50.Kb3 Bd2  
51.Qc5 Qb1+ 52.Kc4 Qa2+ 53.Kd3 Bf4  
54.a7 h3!! 55.a8Q (Queen # 3.) 55...Qxa8  
56.Bxa8 h2 (The h-pawn can not be  
stopped.) 57.b6 h1Q (Queen # 4.) 58.Qf2  
Qb1+ 59.Kc4 Qa1 60.b7 Qa4+ 61.Kd5

Qd7+ 62.Kc4 Qc7+ 63.Kb4 Bg5! 64.c4  
Be7+ 65.Kb3 Qd6 66.Kc2 Qb4 67.Qe2  
Qa4+ 68.Kb1 Qb3+ 69.Qb2 Qd1+  
70.Qc1 Qb3+ (*It's perpetual, but...*)  
71.Ka1?? Qa4+?? 72.Kb1 Qb3+  
73.Ka1?? Bc5!! (*Finally the dullwit sees  
the win.*) 74.b8Q (*Queen # 5.*) 74...Bd4+  
75.Qb2 Bxb2+ 76.Kb1 Qxb8 77.Bd5  
Bd4+ 78.Kc2 Qb2+ 79.Kd3 Qc3+ 80.Ke2  
Qc2+ 81.Ke1 Be3 82.Bxf7 Qf2+ 83.Kd1  
Qd2# 0-1

**Mark Krowczyk** (1901)

**LM Brian Wall** (2272)

1.d4 b5 2.e4 a6 3.Nc3 Bb7 4.Bd3 e6  
5.Nf3 Nf6 6.Qe2 d6 7.0-0 Nbd7 8.Bg5  
h6 9.Bh4 g5 10.Bg3 Nh5 11.d5 e5  
12.Nd1 Nf4 13.Qd2 Nf6 14.Ne3 Bc8  
15.Rae1 Rg8 16.Bxf4 gxf4 17.Nf5 Bxf5  
18.exf5 Nh5 19.Qe2 Qf6 20.a4 bxa4



21.Nd4 Qh4 22.Bxa6 Be7 23.Bb5+ Kf8  
24.Nc6 Bf6 25.Qe4 Rg5 26.Re3 Ng7  
27.Kh1 Rxf5 28.Ra3 Rh5 29.h3 Nf5  
30.Be2 Rg5 31.Bg4 Ne7 32.g3 ffg3  
33.fgg3 Rgg4 34.Qgg4 Qgg4 35.hgg4  
Nxd5 36.c4 Ne7 37.Raf3 Nxc6 38.Rxf6  
Nd8 39.Rxh6 Kg7 40.Rhf6 Rb8 41.R6f2  
Rb4 42.Rc2 Ne6 43.Rff2 c6 44.Rfd2 Nd4  
45.Rc3 Kf6 46.Kg2 Kg5 47.Kh3 Kf6  
48.Kh4 d5 49.cxd5 cxd5 50.Rf2+ Ke6  
51.Rc7 f6 52.Kh5 e4 53.Kg6 Kd6 54.Ra7  
f5 55.gxf5 e3 56.Rf1 Rxb2 57.Rxa4 Rf2  
58.Rxf2 exf2 59.Ra1 Ke5 60.f6 Ke4 61.f7  
Ne6 62.Kf6 Nf8 63.g4 Kf4 64.g5 Nh7+  
65.Ke7 Kxg5 66.Rf1 Kf4 67.Rxf2+ Ke3  
68.Rh2 1-0

**Roger Redmond** (1765)

**Sara Herman** (1584)

1.d4 Nf6 2.c4 e6 3.Nc3 Bb4 4.Bd2 0-0  
5.Nf3 c5 6.e3 d5 7.Be2 b6 8.a3 Bxc3  
9.Bxc3 Ne4 10.Qc2 Nc6 11.Rd1 Ng5  
12.b3 Nxf3+ 13.Bxf3 cxd4 14.exd4 Qd6

15.Qd3 Ba6 16.Bb2 Na5 17.Qe3 Rac8  
18.0-0 dxc4 19.d5 cxb3 20.dxe6 Qxe6  
21.Qd4 Qf6 22.Qxf6 gxf6 23.Rfe1 Nc4  
24.Bxf6 Nxa3 25.Be7 Nc2 26.Re4 f5  
27.Rh4 Rfe8 28.Bd5+ Kg7 29.Bg5 Re1+  
30.Rxe1 Nxe1 31.Bxb3 Rc6 32.Bd2 Nd3  
33.Rh3 Rg6 34.Bc3+ Kf8 35.Rxh7 Rc6  
36.Bg7+ Ke8 37.h3 Bc4 38.Bd1 Bg8  
39.Bh5+ Kd7 40.Rh8 Rc1+ 41.Kh2 Rc8  
42.Be2 Nxf2 43.Ba6 Rd8 44.Bf6 Rf8  
45.Bc3 Ne4 46.Bb4 Rd8 47.Rh6 Nc5  
48.Rg6 Nxa6 49.Rg7+ Kc8 50.Be7 Re8  
51.Bd6 Bd5 52.Rxa7 Bb7 53.Kg1 Rg8  
54.g3 b5 55.Kf2 Rd8 56.Bf4 b4 57.Be5  
b3 58.Ke3 b2 59.Bxb2 Kc7 60.Rxb7+  
Kxb7 ... 0-1

**Mark Krowczyk** (1901)

**Chris Peterson** (2187)

1.d4 Nf6 2.c4 g6 3.Nc3 d5 4.cxd5 Nxd5  
5.e4 Nxc3 6.bxc3 Bg7 7.Bc4 c5 8.Ne2  
0-0 9.0-0 Nc6 10.Be3 Bd7 11.a4 Qc7  
12.Ba2 cxd4 13.cxd4 Nb4 14.Rc1 Qd6  
15.Bb3 Rac8 16.e5 Qa6 17.Qd2 Nc6  
18.Nc3 e6 19.Ne4 Qa5 20.Rc3 Rfd8  
21.Bg5 Qb4 22.Bxd8 Rxd8 23.Rd3 Qb6  
24.Nf6+ Bxf6 25.exf6 Qb4 26.Qh6 Qf8  
27.Qxf8+ Kxf8 28.Rc1 Nb4 29.Rd2 Bc6  
30.f4 Nd5 31.Bxd5 Rxd5 32.Rc5 Ke8  
33.Rxd5 Bxd5 34.a5 Kd7 35.Rd3 Kc6  
36.Kf2 Kb5 37.Ra3 Kc4 38.Ke3 Bxg2  
39.Ra2 Bc6 40.Rc2+ Kb5 41.Rc5+ Ka6  
42.h4 h5 43.f5 gxf5 44.Kf4 Bd5 45.Kg5  
b6 46.axb6 axb6 47.Rc7 b5 48.Rxf7 f4  
49.Rd7 b4 50.f7 Kb5 51.f8Q Kc4  
52.Qc5+ Kd3 53.Qxb4 f3 54.Ra7 Ke3  
55.Ra3+ Kf2 56.Kf4 Kg2 57.Qd2+ f2  
58.Rg3+ Kh1 59.Qxf2 Bf3 60.Rh3# 1-0

**Gunnar Andersen** (2198)

**Earle Wikle** (2012)

1.e4 e6 2.d4 d5 3.Nc3 Bb4 4.e5 Ne7 5.a3  
Bxc3+ 6.bxc3 c5 7.Qg4 cxd4 8.Qxg7 Rg8  
9.Qxh7 Qc7 10.Ne2 dxc3 11.f4 Nbc6  
12.Qd3 d4 13.Nxd4 Nxd4 14.Qxd4 Bd7  
15.Rb1 Nf5 16.Qe4 0-0-0 17.Bb5 Bxb5  
18.Rxb5 Rd4 19.Qe2 Qc6 20.0-0 Nh4  
21.Rf2 Re4 22.Rc5 Qxc5 23.Qxe4 Rxg2+  
24.Qxg2 Nxc2 25.Kxg2 Qd5+ 26.Kg3 b5  
27.Rf3 Qc5 28.Re3 a5 29.h4 Kd8  
30.Rd3+ Ke7 31.Be3 Qc4 32.Bb6 a4  
33.Ba5 Kf8 34.Rxc3 Qe2 35.Bb4+ Kg7  
36.Rf3 Qxc2 37.Be7 Kg6 38.Bb4 Kh5  
39.Be1 Qd1 40.Bf2 Qh1 41.Bc5 Qxh4+  
42.Kg2 Qe1 43.Bf2 Qd2 44.Kh3 b4  
45.Be3 Qe1 46.axb4 a3 47.Bf2 Qxb4  
48.f5 Qg4+ 0-1

**Greg Cottle** (2015)

**Daniel Herman** (1903)

1.d4 Nf6 2.c4 e6 3.Nc3 Bb4 4.e3 c5  
5.Nge2 0-0 6.a3 Bxc3+ 7.Nxc3 cxd4  
8.exd4 d6 9.Bg5 e5 10.d5 Nbd7 11.Ne4  
Qb6 12.Nxf6+ Nxf6 13.Qc2 Nd7 14.Be3  
Qc7 15.Be2 a5 16.0-0 a4 17.b3 axb3  
18.Qxb3 Nc5 19.Bxc5 Qxc5 20.Qb4 Qc7  
21.Rfc1 Ra5 22.Rab1 Rc5 23.Qb6 f5  
24.Qxc7 Rxc7 25.Rb6 Rf6 26.Rcb1 g5  
27.R1b5 Kg7 28.Ra5 e4 29.Ra7 f4 30.h3  
e3 31.a4 Re7 32.a5 h5 33.a6 Rff7  
34.axb7 Bxb7 35.fxe3 fxe3 36.Bxh5 e2  
37.Bxe2 Bxd5 38.Rxe7 Rxe7 39.cxd5  
Rxe2 40.Rxd6 1-0

**Deanna Alter** (1638)

**Tim Brennan** (1818)

1.d4 b5 2.Bf4 Bb7 3.Nf3 Nf6 4.Nbd2 e6  
5.e3 a6 6.c3 d6 7.Bd3 Nbd7 8.0-0 h6  
9.Qc2 g5 10.Bg3 g4 11.Nh4 Be7 12.f3  
Nd5 13.Ng6 Nxe3 14.Qc1 fgg6 15.fgg4  
Nf8 16.Re1 Nxc4 17.Qc2 Rg8 18.Re2



Kd7 19.Rae1 Bh4 20.Ne4 Bxg3 21.hxg3  
h5 22.a4 bxa4 23.Qxa4+ Bc6 24.Qa2 h4  
25.Nc5+ dxc5 26.Rxe6 Rh8 27.Rxc6  
Kxc6 28.Qa4+ Kb7 29.Be4+ Ka7 30.Qc6  
Qc8 31.Qxc5+ Kb8 32.Qb4+ Ka7  
33.Qc5+ Kb8 34.Qb4+ Ka7 1/2-1/2

**LM Brian Wall** (2272)

**Henry Poston** (1697)

1.e4 e6 2.d4 d5 3.e5 c5 4.c3 Nc6 5.Nf3  
Qb6 6.Bd3 Nge7 7.dxc5 Qc7 8.Bf4 Ng6  
9.Bg3 Bxc5 10.Qe2 Bd7 11.Nbd2 d4  
12.h4 dxc3 13.bxc3 Qa5 14.Ne4 0-0  
15.h5 Nd4 16.Nxd4 Bxd4 17.0-0 Nxe5  
18.cxd4 Nxd3 19.Qxd3 Bb5 20.Qf3 Bxf1  
21.Rxf1 Qf5 22.Qxf5 exf5 23.Nd6 Rfd8  
24.Nxf5 g6 25.Nd6 a6 26.h6 Kf8 27.Rd1  
b5 28.d5 Ra7 29.Ne4 f5 30.Ng5 Kg8  
31.d6 Re7 32.Kf1 Ree8 33.Rd5 b4



34.Be5 Rd7 35.f4 Rc8 36.Ra5 Rc6  
37.Ke2 Kf8 38.Kd3 Ke8 39.Kd4 Kf8  
40.Kd5 Rcc7 41.Nxh7+ 1-0

**Anthea Carson** (1806)

**Atharva Vispute** (1612)

1.d4 d6 2.Nf3 Bg4 3.e3 Nf6 4.c4 Nbd7  
5.Nc3 e5 6.Bd3 Be7 7.0-0 0-0 8.h3 Bh5  
9.d5 Nc5 10.e4 h6 11.b4 Nxd3 12.Qxd3  
Nh7 13.Bb2 Ng5 14.Nxg5 Bxg5 15.Ne2  
Bf6 16.c5 Rc8 17.Rac1 Bg5 18.Rc2 Re8



19.Ng3 Bg6 20.Qf3 Bh7 21.Qg4 g6  
22.Bc1 Bxc1 23.Rfxc1 dxc5 24.bxc5 Kh8  
25.Qe2 f5 26.Qb5 fxe4 27.Nxe4 g5  
28.Qd3 c6 29.d6 b6 30.d7 Rg8 31.Qd6  
Rc7 32.Qxe5+ Rg7 33.Rd2 Rcxd7  
34.Nd6 Qf8 35.Rcd1 bxc5 36.Qxc5 Rc7  
37.Qc3 Kg8 38.Ne8 Rc8 39.Nxg7 Qxg7  
40.Qc5 Kh8 41.Rd8+ Rxd8 42.Rxd8+  
Bg8 43.Kh2 Qc7+ 44.Qd6 Qxd6+  
45.Rxd6 Bxa2 46.Rxc6 Kg7 47.Rc7+ Bf7  
48.Rxa7 h5 49.g3 Kf6 50.Ra5 Be6 51.f3  
Kg6 52.Kg2 Kf6 53.Ra6 Kf7 54.h4 g4  
55.f4 Ke7 56.Kf2 Kf7 57.Ke3 Ke7  
58.Kd4 Bd7 59.Ke5 Be8 60.Rh6 Kf8  
61.f5 Kg7 62.Ra6 Kg8 63.Ra7 Kf8  
64.Kf6 Bb5 65.Rh7 Ke8 66.Rxh5 ... 1-0

**Alex Stiger** (1743)

**Richard Brown** (1618)

1.e4 d5 2.exd5 Qxd5 3.Nf3 Nf6 4.d4 Bf5  
5.Be2 e6 6.0-0 Be7 7.c4 Qd8 8.Nc3 c6  
9.Re1 0-0 10.a3 Nbd7 11.b4 Rc8 12.h3  
Ne4 13.Nxe4 Bxe4 14.Bb2 Nf6 15.Qb3  
Qc7 16.Rad1 b5 17.Ne5 bxc4 18.Bxc4  
Bd5 19.Rc1 Qb7 20.Qd3 Qb6 21.Bxd5  
cxd5 22.g4 Rc7 23.Rxc7 Qxc7 24.Rc1  
Qb7 25.Qc3 Bd6 26.Qc6 Qxc6 27.Rxc6  
Bxe5 28.dxe5 Ne4 29.Bd4 Nd2 30.Kg2  
h6 31.Bxa7 Ra8 32.Rc7 Nc4 33.a4 Nxe5  
34.b5 Nc4 35.Rb7 Na5 36.Rb8+ Rxb8  
37.Bxb8 Kf8 38.Bc7 Nb7 39.a5 Nxa5  
40.Bxa5 Ke8 41.b6 1-0

**Jason Lee** (1393)

**David Hufnagel** (1727)

1.d4 Nf6 2.Nf3 g6 3.Bf4 Bg7 4.Nbd2 d6  
5.e4 0-0 6.c3 Nh5 7.Bg3 Bg4 8.Be2 Nd7  
9.Nh4 Bxe2 10.Qxe2 e5 11.Nhf3 Nf4



12.Bxf4 exf4 13.0-0 Re8 14.Nb3 Nf6  
15.Nfd2 Nxe4 16.Nxe4 f5 17.Qf3 fxe4  
18.Qxf4 Qf6 19.Qd2 Re7 20.Rfe1 Rae8  
21.Re2 Qh4 22.Rae1 Bh6 23.Qc2 Qg5  
24.Rxe4 Qf5 25.f3 d5 26.g4 Qf7 27.Rxe7  
Rxe7 28.Rxe7 Qxe7 29.Kg2 Qe1 30.a3  
Be3 31.Qd3 Qf2+ 0-1

**Mihaly Toth** (1200)

**Shirley Herman** (1080)

1.e4 e6 2.d4 d5 3.Nc3 Nf6 4.e5 Nfd7  
5.Nf3 Be7 6.Bd3 0-0 7.Be3 f6 8.Bf4 fxe5  
9.Bxe5 Nxe5 10.Nxe5 c5 11.Bxh7+ Kxh7  
12.Qh5+ Kg8 13.Ng6 Rf5 14.Qh8+ Kf7  
15.Qxd8 Bxd8 16.Ne5+ Kf6 17.g4 Rf4  
18.Ne2 cxd4 19.Nxf4 Kxe5 20.Nd3+ Ke4  
21.0-0-0 Kf3 22.Rhg1 Nc6 23.Rg3+ 1-0

**Earle Wikle** (2012)

**Dean Clow** (2086)

1.d4 d5 2.c4 e6 3.Nc3 Nf6 4.cxd5 exd5  
5.Bg5 Nbd7 6.e3 c6 7.Bd3 Qa5 8.Qc2  
Bd6 9.Nf3 h6 10.Bh4 0-0 11.0-0 b5  
12.e4 b4 13.e5 bxc3 14.bxc3 g5 15.Nxg5  
hxg5 16.Bxg5 Ne4 17.Bh6 Qxc3 18.Bxe4  
Qxc2 19.Bxc2 Bb4 20.f4 Kh8 21.Rf3  
Rg8 22.f5 Rg4 23.e6 Nf6 24.exf7 Bd7  
25.Rh3 Nh7 26.f6 Re4 27.Bg7# 1-0

**Rhett Langseth** (2069)

**Paul Baxter** (1897)

1.Nf3 d5 2.d3 Nf6 3.c3 g6 4.Nbd2 Bg7  
5.e4 c5 6.Be2 Nc6 7.0-0 e5 8.Re1 0-0  
9.a4 Be6 10.Qc2 Rc8 11.h3 d4 12.Ng5  
Qe7 13.Nxe6 Qxe6 14.Nc4 Nd7 15.Qb3  
Nb6 16.a5 Nxc4 17.dxc4 Qe7 18.Qc2 f5  
19.Bd2 Qh4 20.Bf3 f4 21.Bg4 Rc7



22.Be6+ Kh8 23.f3 h5 24.Reb1 Re8  
25.Bd5 Qf6 26.Qa4 Rec8 27.Ra3 Ne7  
28.Re1 Nxd5 29.exd5 Bf8 30.Re4 Bd6  
31.Ra1 g5 32.Rae1 Re7 33.b3 Kg7  
34.cxd4 cxd4 35.Bb4 b6 36.Qa3 Bc5  
37.Bxc5 bxc5 38.b4 Qd6 39.b5 Kf6  
40.Rb1 Rb8 41.Qd3 h4 42.Re2 Rbb7  
43.Reb2 Qd7 44.Qe4 Qf5 45.Kf2 Qxe4  
46.fxe4 Red7 47.b6 a6 48.Rb5 axb5  
49.Rxb5 Rd6 50.Rxc5 Rdx6 51.axb6  
Rxb6 52.Ra5 Rb2+ 53.Kf3 Rb3+ 54.Kf2  
Rb2+ 55.Kg1 d3 56.Ra1 Rc2 57.Rd1  
Rxc4 58.Rxd3 Rxe4 59.Ra3 Rd4 60.Ra6+  
Kf5 61.Rd6 e4 62.Rd8 Ke5 63.Rg8 Kf6  
64.Rd8 Ke7 65.Ra8 Rxd5 66.Ra6 Rd6  
67.Ra5 Kf6 68.Kf2 Re6 69.Ke2 Re5  
70.Ra8 Rb5 71.Rf8+ Kg7 72.Ra8 Rb2+  
73.Kf1 e3 74.Ra6 Rf2+ 75.Kg1 f3  
76.gxf3 Rxf3 77.Kg2 Rg3+ 78.Kh2 Kf7  
79.Rb6 e2 80.Rb4 Rxh3+ 81.Kxh3 e1Q  
82.Rb7+ Kg6 83.Rb6+ Kh5 84.Rb3 Qe6+  
0-1



# COLORADO SPRINGS OPEN - 2015

## FINAL STANDINGS

**CHIEF TOURNAMENT DIRECTOR - RICHARD "BUCK" BUCHANAN**

<a href="#">1</a>		<a href="#">EARLE P WIKLE</a>		4.5		D		17 W		36 W		22 W		7 W		8
CO		12126030 / R: 2012														
<a href="#">2</a>		<a href="#">GREGORY L COTTLE</a>		4.5		W		28 W		30 H		W		15 W		10
NV		12412221 / R: 2015														
<a href="#">3</a>		<a href="#">CHRIS PETERSON</a>		4.0		W		33 W		24 W		5 L		4 W		16
CO		12859076 / R: 2187														
<a href="#">4</a>		<a href="#">MARK KROWCZYK</a>		4.0		W		44 W		13 W		6 W		3 U		
CO		12496393 / R: 1901														
<a href="#">5</a>		<a href="#">PAUL ANTHONY BAXTER</a>		4.0		W		53 W		18 L		3 W		19 W		14
CO		12876351 / R: 1897														
<a href="#">6</a>		<a href="#">BRIAN D WALL</a>		3.5		W		42 D		11 L		4 W		27 W		23
CO		10923344 / R: 2272														
<a href="#">7</a>		<a href="#">GUNNAR JAMES ANDERSEN</a>		3.5		W		27 W		23 D		9 L		1 W		24
CO		14011512 / R: 2198														
<a href="#">8</a>		<a href="#">DEAN CLOW</a>		3.5		W		19 W		12 D		15 W		9 L		1
CO		14819401 / R: 2086														
<a href="#">9</a>		<a href="#">JUSTIN ALTER</a>		3.5		W		35 W		31 D		7 L		8 W		26
CO		14316670 / R: 1975														
<a href="#">10</a>		<a href="#">JACK J WOHR</a>		3.5		W		43 W		50 W		14 H		L		2
CO		11350330 / R: 1823														
<a href="#">11</a>		<a href="#">TIMOTHY E BRENNAN</a>		3.5		W		47 D		6 H		D		17 W		29
CO		12718954 / R: 1818														
<a href="#">12</a>		<a href="#">JEFFREY ALAN BAFFO</a>		3.5		W		40 L		8 W		20 W		39 H		
CO		10340195 / R: 1762														
<a href="#">13</a>		<a href="#">DAVID HUFNAGEL</a>		3.5		W		52 L		4 H		W		36 W		22
CO		12370120 / R: 1727														
<a href="#">14</a>		<a href="#">RHETT LANGSETH</a>		3.0		W		20 W		26 L		10 W		33 L		5
CO		13392987 / R: 2069														
<a href="#">15</a>		<a href="#">DANIEL HERMAN</a>		3.0		W		21 W		32 D		8 L		2 D		17
CO		14345456 / R: 1903														
<a href="#">16</a>		<a href="#">TONY DUTIEL</a>		3.0		W		37 H		D		17 W		18 L		3
NE		12602486 / R: 1852														
<a href="#">17</a>		<a href="#">DEANNA ALTER</a>		3.0		D		1 W		51 D		16 D		11 D		15
CO		14431124 / R: 1638														
<a href="#">18</a>		<a href="#">BARRY NEAL RABINOVICH</a>		3.0		W		49 L		5 W		37 L		16 W		35
CO		12871094 / R: 1707														
<a href="#">19</a>		<a href="#">ANDREW T LIN</a>		3.0		L		8 W		38 W		45 L		5 W		37
CO		14430362 / R: 1659														
<a href="#">20</a>		<a href="#">ALEMAYEHU MEKONNEN</a>		3.0		L		14 W		46 L		12 W		47 X		
CO		14604218 / R: 1656														
<a href="#">21</a>		<a href="#">MIKE MADSEN</a>		3.0		L		15 W		48 D		31 D		32 W		33
CO		12660190 / R: 1513														
<a href="#">22</a>		<a href="#">DUWAYNE LANGSETH</a>		2.5		W		29 H		L		1 W		42 L		13
CO		11197175 / R: 1957														
<a href="#">23</a>		<a href="#">CLIFTON P FORD</a>		2.5		W		38 L		7 W		34 D		29 L		6
CO		10384591 / R: 1815														
<a href="#">24</a>		<a href="#">ANTHEA JANE CARSON</a>		2.5		W		46 L		3 D		28 W		34 L		7
CO		12614322 / R: 1806														

<a href="#">25</a>		<a href="#">ALEXANDER FREEMAN</a>		2.5		L	36 L	34 H		W	50 W	39
CO		14201087 / R: 1832										
<a href="#">26</a>		<a href="#">ALEX J STIGER</a>		2.5		W	45 L	14 H		W	28 L	9
CO		13177970 / R: 1743										
<a href="#">27</a>		<a href="#">HENRY WILLIAM POSTON</a>		2.5		L	7 W	44 D	36 L	6 W	43	
NM		13634773 / R: 1697										
<a href="#">28</a>		<a href="#">RICHARD ARAM BROWN</a>		2.5		L	2 W	40 D	24 L	26 W	44	
CO		14437935 / R: 1618										
<a href="#">29</a>		<a href="#">SARA HERMAN</a>		2.5		L	22 W	52 W	30 D	23 L	11	
CO		14345441 / R: 1584										
<a href="#">30</a>		<a href="#">ROGER W REDMOND</a>		2.0		W	39 L	2 L	29 W	38 U		
CO		12044380 / R: 1765										
<a href="#">31</a>		<a href="#">JOSE A LLACZA MAGNO</a>		2.0		W	41 L	9 D	21 H		F	
CO		14383991 / R: 1712										
<a href="#">32</a>		<a href="#">ROBERT NEWTON ROUNTREE SR</a>		2.0		W	48 L	15 H		D	21 U	
CO		12937640 / R: 1713										
<a href="#">33</a>		<a href="#">LENNON GASHWAZRA</a>		2.0		L	3 W	47 W	49 L	14 L	21	
CO		13963663 / R: 1681										
<a href="#">34</a>		<a href="#">ATHARVA P VISPUTE</a>		2.0		H		W	25 L	23 L	24 D	36
CO		15046237 / R: 1612										
<a href="#">35</a>		<a href="#">VIBI VARGHESE</a>		2.0		L	9 D	45 H		W	41 L	18
CO		12919769 / R: 1578										
<a href="#">36</a>		<a href="#">JASON F LEE</a>		2.0		W	25 L	1 D	27 L	13 D	34	
CO		14562921 / R: 1393										
<a href="#">37</a>		<a href="#">DEAN W BROWN</a>		2.0		L	16 W	41 L	18 W	49 L	19	
CO		10224098 / R: 1454										
<a href="#">38</a>		<a href="#">JESSE WILLIAMS</a>		2.0		L	23 L	19 W	48 L	30 W	49	
CO		15487731 / R: 1354										
<a href="#">39</a>		<a href="#">DIMITRI LOPEZ</a>		2.0		L	30 W	53 W	50 L	12 L	25	
NM		14288440 / R: 1166										
<a href="#">40</a>		<a href="#">MIHALY TOTH</a>		2.0		L	12 L	28 L	47 W	48 W	50	
CO		12927302 / R: 1200										
<a href="#">41</a>		<a href="#">TEAH WILLIAMS</a>		2.0		L	31 L	37 B		L	35 W	47
CO		15487752 / R: 1155										
<a href="#">42</a>		<a href="#">GARY BAGSTAD</a>		1.5		L	6 W	43 H		L	22 U	
CO		10924031 / R: 1700										
<a href="#">43</a>		<a href="#">SULLIVAN MAC MCCONNELL</a>		1.5		L	10 L	42 H		W	45 L	27
CO		14696346 / R: 1391										
<a href="#">44</a>		<a href="#">GRIFFIN THOMAS MCCONNELL</a>		1.5		L	4 L	27 H		W	52 L	28
CO		14692997 / R: 1354										
<a href="#">45</a>		<a href="#">JOSHUA WILLIAMS</a>		1.5		L	26 D	35 L	19 L	43 W	52	
CO		15487746 / R: 1269										
<a href="#">46</a>		<a href="#">PETER STANTON NEEDHAM</a>		1.0		L	24 L	20 W	53 U		U	
CO		15457024 / R: 1282										
<a href="#">47</a>		<a href="#">TOM NEEDHAM</a>		1.0		L	11 L	33 W	40 L	20 L	41	
CO		12743781 / R: 1326										
<a href="#">48</a>		<a href="#">SHIRLEY HERMAN</a>		1.0		L	32 L	21 L	38 L	40 B		
CO		14812654 / R: 1080										
<a href="#">49</a>		<a href="#">TARA R MARTINEZ</a>		1.0		L	18 B		L	33 L	37 L	38
CO		13436004 / R: 1027										
<a href="#">50</a>		<a href="#">SELAH WILLIAMS</a>		1.0		B		L	10 L	39 L	25 L	40
CO		15487767 / R: 1005										
<a href="#">51</a>		<a href="#">THOMAS HENRY CORBETT</a>		0.5		H		L	17 U		U	
CO		12417362 / R: 1613										
<a href="#">52</a>		<a href="#">PETER EVERETT KRAUSE</a>		0.5		L	13 L	29 H		L	44 L	45
CO		15468794 / R: 1026										
<a href="#">53</a>		<a href="#">REBECCA HERMAN</a>		0.0		L	5 L	39 L	46 U		U	
CO		14596051 / R: 1552										

# Tactics Time!

by Tim Brennan

One of the best ways to improve your game is to study tactics, such as the following, from games played by Colorado players. Answers are on the next page.

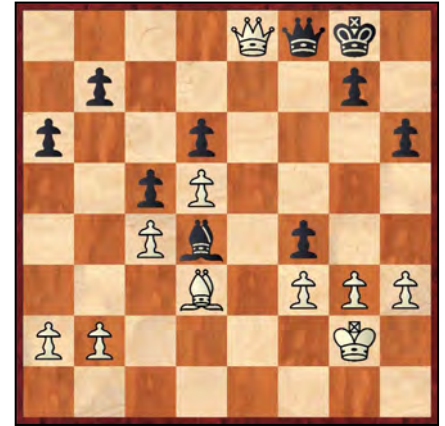
[www.TacticsTime.com](http://www.TacticsTime.com)



**1. Tim Brennan - Sara Herman**  
*Colorado Springs Open / 2015*  
 White to move



**2. Dean Clow - Jeffrey Baffo**  
*Colorado Springs Open / 2015*  
 White to move



**3. Tim Kohler - Barry Hepsley**  
*Wyoming Open / 2014*  
 White to move



**4. Somnath Mukherjee - Rob Hartelt**  
*Saturday Chess at Wendy's / 2015*  
 White to move



**5. Raymond Simanjuntak - Devon Wall**  
*State Scholastic Championship / 2015*  
 Black to move



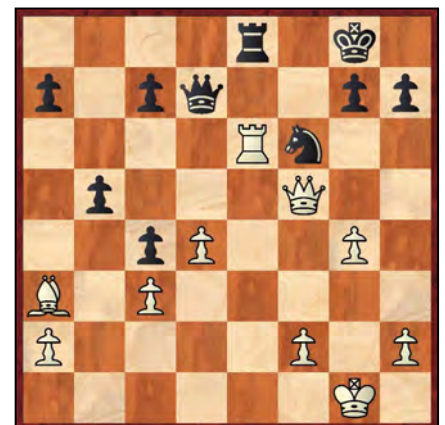
**6. Chris Peterson - Paul Baxter**  
*Loveland Open / 2015*  
 White to move



**7. Rick Dulz - Todd Burge**  
*Denver Chess Club Casual / 2015*  
 White to move



**8. Jeffrey Baffo - Dean Brown**  
*Fort Collins Olympiad / 2015*  
 Black to move



**9. LM Brian Wall - Chris Peterson**  
*DCC Tribute to MLK / 2015*  
 White to move



*"The Chess Game" by Boris Dubrov*

## Tactics Time Answers:

1. **9.Bxf7+** wins a pawn. **9...Kxf7 10.Ng5+ Ke8 11.Qxg4.**
2. When Bryce Harper was asked by reporters if he liked Jeff's previous move of **38...Qf6**, he responded, "That's a Clow question, bro!" **39.Nxh5+** forks the king and queen.
3. **29.Bh7+!** Overloads the Black king like the Griswold family truckster driving to Wally World. **29...Kxh7 30.Qxf8.**
4. **15.Nxc7+ Kf8 16.Qd8#.** This was a brilliant game featuring a double rook sacrifice.
5. **9...Bg4+ 10.Qf3 Bxf3+ 11.gxf3 Qxf3+ 12.Ke1 Nxc2+** is buying a stairway to Devon.
6. Baxter... is that you? Baxter! Bark twice if you are in Milwaukee. Bark once if you missed **30.Qxd4.** The rook on d7 is pinned.
7. **6.Bxf7+ Kd7 7.Qd5#.**
8. The Brown eye spotted this tactic against Backdoor Professor Baffo, **32...Rxd6** winning a piece. The c pawn is pinned.
9. **23.Rxf6** wins a piece. If **23...Qxf5 24.Rxf5.** If **23...gxf6 24.Qxd7.**

Want more original chess tactics from real games like these? Get "Tactics Time" delivered straight to your e-mail inbox for FREE! Newsletters come out 3 times a week. Sign up now for the Tactics Time e-mail newsletter at [www.tacticstime.com](http://www.tacticstime.com).



## Zombie Apocalypse

by Matthew O'Hara

Avinaya Subedi (2080)

Matthew O'Hara (2066)

Zombie Apocalypse (Round 4)

March 15, 2015

### 1.e4 e5 2.Nf3 Nc6 3.Bb5 f5 4.Nc3

The Schliemann variation offers surprise value at some risk. While Korchnoi and Lombardy have employed this, Radjabov has recently used it with moderate success. A game with Caruana went 4.d3 fxe4 5.dxe4 Nf6 6.0-0 Bc5 7.Bxc6 bxc6 8.Nxe5 0-0 9.Nc3 d6 10.Na4 Qe8 11.Nd3 Nxe4 (11...Bg4 12.Qe1 Bd4 had to be tried.) 12.Naxc5 Nxc5 13.Nxc5 dxc5 Caruana,F (2772) - Radjabov,T (2793) Zug 2013. White has a winning edge. The opposite colored bishops do not offset the isolated triple pawns.

### 4...fxe4 5.Nxe4 Nf6 6.d3 d5 7.Ng3 Bd6 8.0-0 0-0 9.Re1



### 9...Bg4

9...Nd4 10.Nxd4 exd4 would have given Black more of an advantage than he saw in the game. White has tempting targets on f2 and h2. The doubled pawn on d4 provides Black with a spatial advantage and more avenues of attack for his bishops and the open files.

### 10.Bxc6 bxc6 11.h3 Bxf3 12.Qxf3 Qe8

I was planning 12...Ne4 13.Nf5 but didn't find 13...Nc5 with some pressure. I considered 12...e4 which was better than the move I settled on.

### 13.Nf5 Qd7

This will avoid further trouble by acknowledging his previous mistake.



### 14.Nxd6 Qxd6

14...cxd6 seems to work a little better; the doubled pawns are improved by the transfer to the d-file.

### 15.Qe2

15.Qe3 was necessary, hitting the e-pawn and eyeing the a7 pawn. 15...Nd7 and now white can finish developing his pieces.

### 15...e4

15...Rae8 was more solid, holding the pawn center and mustering the forces behind it.

### 16.d4?

16.dxe4 was the way. White wants to open up lines for the bishop and rooks.

### 16...c5 17.c3?! exd4 18.cxd4 c5 19.dxc5 Qxc5 20.Be3?

20.Bg5 holds the pawns back.

### 20...d4

This sequence of moves left me exuberant. Black upgraded the backwards, doubled c-pawns for a powerhouse center pawn tandem.

### 21.Rec1 Qd5 22.Bd2

Here I went into a long think. I felt that my position was better, but I couldn't find a good move until I considered...

(See diagram at top of next column.)

### 22...e3 23.Bb4

23.fxe3 d3 24.Qd1 Ne4 25.Rc7 Qe5 gives Black a dangerous attack.

### 23...exf2+ 24.Qxf2 Ne4 25.Qh4



25.Qc2 d3 26.Qc4 Rfd8 27.Qxd5+ Rxd5 28.Rc4 d2 29.Rxe4 d1Q+ was a better try for White.

### 25...Rfe8

I looked for a way to play 25...Rf2, but it leaves Black overextended.

### 26.Rc7 a5

26...d3 creates more problems for White.

### 27.Ba3

27.Qg4 was necessary. 27...g6 28.Be1 Rad8 29.Bh4 Rd6 Black's advantage here is much less than in the game.

27...d3 28.Re7 Rxe7 29.Qxe7 d2 30.Kh2 Nf2 31.Rf1 d1Q 32.Rxf2 Qd8 33.Qe6+ Kh8 34.Rf8+ Qxf8 35.Bxf8 Rxf8 36.Qe7 Qd8 0-1



## 2014-2015 Colorado Tour Standings after the DCC Tribute to MLK

### Overall

	Name	Rating	Points	Games
1	Chris Peterson	2172	159.0	19
2	LM Brian Wall	2248	153.6	19
3	Rhett Langseth	2006	145.3	19
4	Gunnar Andersen	2188	140.1	17
5	Justin Alter	2015	136.2	19
6	Dean Clow	2022	130.5	18
7	Mark Krowczyk	1855	121.3	18
8	Ryan Swerdlin	2123	113.8	14
9	Daniel Herman	1854	110.9	19
10	Vibi Varghese	1601	109.9	18

### Active

	Name	Rating	Points	Games
1	Chris Peterson	2172	159.0	19
2	LM Brian Wall	2248	153.6	19
3	Rhett Langseth	2006	145.3	19
4	Justin Alter	2015	136.2	19
5	Daniel Herman	1854	110.9	19
6	Sara Herman	1575	102.5	19
7	Richard Buchanan	2000	102.3	19
8	Dean Brown	1509	85.4	19
9	Shirley Herman	1124	78.1	19
10	Dean Clow	2022	130.5	18

### Expert

	Name	Rating	Points	Games
1	Chris Peterson	2172	159.0	19
2	Rhett Langseth	2006	145.3	19
3	Gunnar Andersen	2188	140.1	17
4	Justin Alter	2015	136.2	19
5	Dean Clow	2022	130.5	18
6	Ryan Swerdlin	2123	133.8	14
7	Richard Buchanan	2000	102.3	19
8	Avinaya Subedi	2120	96.6	13
9	Victor Huang	2002	82.2	13
10	Kevin Seidler	2092	77.2	10

### Class A

	Name	Rating	Points	Games
1	Mark Krowczyk	1855	121.3	18
2	Daniel Herman	1854	110.9	19
3	Anthea Carson	1814	105.1	18
4	Earle Wikle	1995	99.4	13
5	Tim Brennan	1834	96.6	12
6	Paul Baxter	1890	89.4	10
7	Jack Woehr	1876	84.5	9
8	DuWayne Langseth	1980	73.8	10
9	Joshua Samuel	1939	70.3	13
10	Isaac Martinez	1936	68.1	10

### Class B

	Name	Rating	Points	Games
1	Vibi Varghese	1601	109.9	18
2	Atharva Vispute	1649	106.2	18
3	Richard Brown	1634	105.1	15
4	Jeffrey Baffo	1774	104.6	15
5	Andrew Lin	1636	101.9	15
6	Lennon Gashwazra	1623	98.6	15
7	Deanna Alter	1640	94.1	14
8	Andy Wu	1799	89.0	13
9	Alexander Freeman	1769	84.9	13
10	Cory Foster	1693	81.9	13

### Class C

	Name	Rating	Points	Games
1	Sara Herman	1575	102.5	19
2	Mike Madsen	1558	87.2	14
3	Dean Brown	1509	85.4	19
4	Rebecca Herman	1552	84.9	17
5	William Wolf	1472	53.5	9
6	Lone Bottinelli	1570	51.2	10
7	Matthew Zeller	1587	50.0	5
8	Anand Vissa	1462	45.0	5
9	Logan Fry	1537	42.9	5
10	Javier Hollines	1599	30.0	5

### Class D

	Name	Rating	Points	Games
1	Sullivan McConnell	1271	101.9	18
2	Griffin McConnell	1269	85.4	18
3	Shamik Bhat	1300	81.2	10
4	Nelson Perez	1296	72.0	10
5	Priya Bhavikatti	1277	68.4	10
6	Frank Atwood	1227	57.6	10
7	Alexander Marsh	1290	57.5	9
8	Christopher Cannon	1332	55.6	9
9	Evan Akhavan	1387	55.0	5
10	Neil Bhavikatti	1269	51.2	10

### Class E

	Name	Rating	Points	Games
1	Shirley Herman	1124	78.1	19
2	Tara Martinez	1054	73.1	18
3	Teah Williams	966	52.4	9
4	Gary Crites	1154	51.0	10
5	Devon Wall	1035	50.0	5
6	Jesse Williams	1078	47.4	9
7	Joshua Williams	1022	47.0	9
8	Owen Honeycutt	1077	45.0	5
9	Jordan Dorchuck	1196	44.0	9
10	Mukund Gurumurthi	1098	43.2	10

## COLORADO CHESS CLUB DIRECTORY

**Boulder Chess Club:** Is back in business and meets every Wednesday at the UMC Alferd Packer Grill 6:30-11:30pm. Contact Ginny Gaige at [gimmygaige@gmail.com](mailto:gimmygaige@gmail.com) or Julian Evans at [julian.evans@colorado.edu](mailto:julian.evans@colorado.edu) for more information.

**Carbondale Chess Club:** Meets every Tuesday from 6:00pm until the wee hours at Kakhak Fine Arts & School, 411 Main Street, Carbondale. All levels and ages are welcome and chess coaching is available. Please contact Majid Kakhak at (970) 704-0622 or email: [Mkakhak@sopris.net](mailto:Mkakhak@sopris.net).

**Castle Rock Chess Club:** Meets every Monday from 6:00-9:00pm at the Philip S. Miller Library, 100 South Wilcox Street, Castle Rock.

**Chess Knights:** (Highlands Ranch) Meets on the 2nd & 4th Wednesday evenings from 7:00-9:00pm. From C-470 & Broadway, on Broadway go 1.3 miles south, at the light, turn right onto Highland Ranch Parkway, go 0.2 miles, to the first light, turn left onto Ridgeline Blvd., go 0.2 miles, the library is on the left. We meet in the conference room on the left beyond the restrooms. Information is also available on the Chess Knights' Web site at <http://HighlandsRanchLibraryChess.org>. Contact: Frank Atwood (720) 260-1493 or by email: [FrankAtwood@HighlandsRanchLibraryChess.org](mailto:FrankAtwood@HighlandsRanchLibraryChess.org).

**Chessmates Chess Club:** (Fort Collins) 111 North College Ave. Meeting upstairs, Monday 3:45-4:45pm & Thursday 4:45-6:15pm. For kids ages 6-14 of all levels. Instructed by Zachary Bekkedahl. For more information go to [www.chessmatesfc.com](http://www.chessmatesfc.com) or email: [info@chessmatesfc.com](mailto:info@chessmatesfc.com).

**Colorado Springs Chess Club:** Meets Tuesday evenings, 7:00-10:00pm, in the ballroom of the Acacia Apartments building, 104 East Platte. Scheduled activities every meeting at 8:00pm (must show up by 8:00pm or you might be locked out). For information see their website at [www.SpringsChess.org](http://www.SpringsChess.org) or email Buck Buchanan at [buckpeace@pcisys.net](mailto:buckpeace@pcisys.net) or call (719) 685-1984.

**Craig Chess Club:** Call Rick or Mary Nelson, (970) 824-4780 to schedule play.

**Denver Chess Club:** Meets on Tuesdays, 6:00-10:00pm at the Third Christian Reformed Church, 2400 South Ash Street, Denver. (303) 733-8940. [www.DenverChess.com](http://www.DenverChess.com)

**Denver Chess / Meetup.com:** This group is run through the social site [Meetup.com](http://Meetup.com), and our page is [www.Meetup.com/Learn-to-Play-Chess/](http://www.Meetup.com/Learn-to-Play-Chess/). Players must join in order to receive information and sign up for events. Contact: David Costantino at [avs1cup@yahoo.com](mailto:avs1cup@yahoo.com) or through the group's [Meetup.com](http://Meetup.com) page.

**Durango Chess Club:** Meets on Wednesdays from 6:00-9:00pm at Durango Joe's Coffee Shop, 732 East College Drive.

**Fort Collins Chess Club:** Currently meets Tuesdays, 7:00pm, in the food court of the Lory Student Center (2nd level), Colorado State University. You can email Randy Reynolds at [randy\\_heyana@msn.com](mailto:randy_heyana@msn.com). On the net - [http://groups.yahoo.com/group/fort\\_collins\\_chess](http://groups.yahoo.com/group/fort_collins_chess).

**Fort Lewis College Chess Club:** Meets Thursday nights in the X-treme room which is located the College Union Building, the club is sponsored by the school and is a USCF affiliate club. For more info, contact Andrea Browne at (970) 247-6239.

**Grand Junction Chess Club:** Meets Mondays at 6:30pm in the Safeway at Starbucks, 2901 Patterson Road. Call Rick Lovato at (970) 243-1073.

**Grand Junction Junior Chess Club:** Meets every 3rd Saturday of the month at the Knights of Columbus Building, 2853 North Avenue. Call Rand Dodd at (970) 245-4015.

**Greeley Chess Club:** Meets Wednesdays, 6:00-9:00pm at Your Place Coffee, 2308 West 17th Street, Greeley. Contact Brad Lundstrom at [ChessCoach2014@gmail.com](mailto:ChessCoach2014@gmail.com). Or call him at (720) 272-9384.

**Lafayette Chess Club:** Meets Mondays, from 6:00-9:00pm at the Mojo Coffeehouse, 211 North Public Road in Lafayette. Contact Victor Creazzi at (303) 332-7039 or by email at [aerofirewp@yahoo.com](mailto:aerofirewp@yahoo.com) for more information.

**Longmont Chess Club:** Meets Wednesdays from 6:00-9:00pm. Check [www.LongmontChess.com](http://www.LongmontChess.com) for current meeting location. Contact Todd Burge at (720) 220-5240 or by email at [Admin@LongmontChess.com](mailto:Admin@LongmontChess.com).

**Northeast Denver Chess Club:** Meets Mondays and Thursdays from 4:00-8:00pm at 2575 Vine Street, Denver. Call (303) 320-6716 for more info.

**Pagosa Springs Chess Club:** Meets on Tuesdays (6:00-9:00pm) and on Saturday mornings (9:00-Noon) at Nello's Restaurant, 135 Country Center Drive, #A. For more information contact Anthony Steventon by email at [asteveton@centurytel.net](mailto:asteveton@centurytel.net) or at (970) 731-3029.

**Pueblo Chess Club:** Meets at the Daily Grind Café, 209 South Union on Tuesdays and Thursdays after 6:30pm. For more info contact Liz Nickovich at [chessliz@comcast.net](mailto:chessliz@comcast.net) or by phone at (719) 696-8389.

**Rifle Chess Club:** Meets Thursdays, 6:30-9:00pm, at City Hall. For information email Dane Lyons at [duilen@gmail.com](mailto:duilen@gmail.com).

**Stonebridge Games Chess Club:** (Longmont) Meets Tuesdays at 5:00pm. 449 Main Street, Longmont. Call (303) 776-3796 for more info.





## UPCOMING COLORADO TOURNAMENTS

### CSCC April Swiss Tuesdays April 7 - 28, 2015

#### 4 Round Swiss System Tournament.

**Time Control:** G/75; inc/30

**Site:** Ballroom in the Acacia Apartment Building, 104 E. Platte, Colorado Springs, CO

**Open:** One section open to all USCF members

**Entry fee:** \$10 includes 4 rounds over 4 weeks (1 game / week); \$5 discount for CSCC Supporting Members. Exact cash preferred. No checks for entry fees.

**Prizes:** Cash based on entries.

**Registration:** About 6:00pm until 6:45pm, Rounds: 7:00 p.m..

**Entries:** Paul Anderson

**Phone:** (719) 310-9635 SMS available

**E-mail:** [cschess@live.com](mailto:cschess@live.com)

Player responsibility: (1) Inform the TD if you are unable to make any round. You will be paired each round once you have registered even if you haven't arrived at pairing time. Late players have an hour from the start time to show up and move before they forfeit. Keep TD contact information please. Help us avoid forfeit wins and players' not having a game. (2) Forfeit results in \$5 fee and withdraw until fee is paid. No entry to other events by TD until fee is paid.

### DCC April Tuesdays Tournament April 7 - 28, 2015

#### 4 Round Swiss System Tournament.

**Time Control:** G/70; d/05

**Site:** Third Christian Reform Church at 2400 S. Ash, Denver, CO 80222

**Directions:** One block East of S. Colorado Blvd. on Wesley. Please use rear entrance.

**Open:** Open to all USCF members

**Entry fee:** DCC members, \$6 per night or \$20 per month. Non DCC members, \$8 and \$30.

**Prizes:** Based on entries

**Registration:** 6:30 - 7:15pm, Rounds: begins at 7:30pm.

**Entries:** At the door each Tuesday.

**Phone:** 303 883 2684

**E-mail:** [liencam2@yahoo.com](mailto:liencam2@yahoo.com)

One round each Tuesday. Only one bye may apply to a players score, with regards to winning prize money. Last round bye must be requested before the start of the penultimate round. Casual players and spectators are welcome.

### Blitz Senior National Top 100 List Blast April 9, 2015

#### 4 Round Swiss System Tournament.

**Time Control:** G/8; d/02

**Site:** Smashburgers, 3604 Austin Bluffs Parkway, Colorado Springs, CO 80918 (near King Sooper's at Academy Blvd.)

**Open:** Open to all USCF members

**Entry fee:** \$1 donation for USCF rating fees suggested; Seniors 65+ play free

**Prizes:** None

**Registration:** 6-6:20, Rounds: Start at 6:30 and finish about 9:30-9:45.

**Entries:** Shirley Herman

**Phone:** (719) 510-0169 SMS available

**E-mail:** [shirley@northgatechess.com](mailto:shirley@northgatechess.com)

4 DOUBLE Round Swiss. Play each pairing as black and white. Byes: One full-point requested bye available for any double round. Zero point byes may be taken for any double round before pairings are made.

Player responsibility: (1) Inform the TD if you withdraw. Help us avoid forfeit wins and players' not having a game. (2) Forfeit results in \$5 fee and withdraw. No entry to other events by TD until fee is paid. (3) Patronize the venue if you will. No outside food purchases.

Bring sets and clocks or borrow equipment before the round starts. TD reserves the right to provide equipment and assign seating to conserve space and time and keep on schedule.

Produced by North Gate Chess.

### Colorado Closed (Adult & Scholastic) April 10 - 12, 2015

#### 5 Round Round Robin System Tournament.

**Time Control:** G90; inc/30

**Site:** Sheraton DTC

**Directions:** 7007 S Clinton St Greenwood Village, CO 80112 Exit I25 at 197, go east, turn right onto S. Clinton St, hotel on right.

**Colorado Closed:** Championship, Challenger, and Booster 6 players each section.

**Scholastic Closed:** Championship and Challenger

**Entry fee:** \$25.00

**Prizes:** 70% of Entry Fees: exact amounts TBD. Winner of Challenger and Booster promoted to next higher section.

**Round Times:** Fri- 6:30PM; Sat-10AM & 3PM; Sun 10AM & 3PM

**Entries:** Paul Covington 748 Cardinal Street, Colorado Springs, CO 80911

**Phone:** 719-310-7542

**E-mail:** [Checkmate@CovingtonComputers.com](mailto:Checkmate@CovingtonComputers.com)

Current CSCA & USCF membership required; Invitation only. Guest Welcome.

Guest Rooms mention Chess for \$79 dollar rate with free wifi.

### NM Todd Bardwick Simultaneous Exhibitions April 11, 2015

**Site:** Highlands Ranch Recreation Center, 9568 So. University Blvd.; Highlands Ranch, CO 80126

**Entry fee:** \$6 if preregistered, \$8 at the door

**Prizes:** Signed certificate if you win or draw

**Phone:** 303-791-2500

**E-mail:** [tbardwick@yahoo.com](mailto:tbardwick@yahoo.com)

**Registration:** [www.HRCAonline.org/Tickets](http://www.HRCAonline.org/Tickets)

**Website:** [www.ColoradoMasterChess.com/simul.htm](http://www.ColoradoMasterChess.com/simul.htm)

Two different Simultaneous Exhibitions starting at 9:00 a.m. and 1:00 p.m. With the exception of the past couple years, Todd has

been giving a Simultaneous Exhibition once a year for around 15+ years. Adults and children are welcome. Todd is a strong simul player and has beaten experts and A players in the past and even drawn with a master in a simul he was giving. Players are encouraged to come at 9:00, but if you can't make it, seats will open up around 1:00 for new players to join in. In the past players were used to showing up the day of the event, it is better this time to preregister.

### **April Accelerated Swiss Thursdays April 16 - 30, 2015**

#### **3 Round Swiss System Tournament.**

**Time Control:** G/100; inc/05

**Site:** Smashburgers, 3604 Austin Bluffs Parkway, Colorado Springs, CO 80918 (near King Sooper's at Academy Blvd.)

**Open:** Open to all USCF members

**Entry fee:** \$1

**Prizes:** None

**Registration:** 5:50-6:05, Rounds: 6:15 p.m..

**Entries:** Shirley Herman

**Phone:** (719) 510-0169 SMS available

**E-mail:** [shirley@northgatechess.com](mailto:shirley@northgatechess.com)

Accelerated or double accelerated pairings will be used in the first round at least.

Games still being played at closing time, 10:00, may be declared a draw by TD.

**Byes:**

U1700 players: Half-point requested byes available for any round. Zero point byes may be taken for any round before pairings are made.

1700+ players: One full-point requested bye available for any round. One half-point requested bye available if the first full point bye has been used. No zero point byes.

**Player responsibility:** (1) Inform the TD if you withdraw. Help us avoid forfeit wins and players' not having a game. (2) Forfeit results in \$5 fee and withdraw. No entry to other events by TD until fee is paid. (3) Patronize the venue if you will. No outside food purchases.

Bring sets and clocks or borrow equipment before the round starts. TD reserves the right to provide equipment and assign seating to conserve space and time and keep on schedule. Produced by the North Gate Chess.

### **Summit School of Chess Tournament Series #8 April 25, 2015**

#### **4 Round Swiss System Tournament.**

**Time Control:** G/45

**Site:** Mile High Vineyard - 5445 Olde Wadsworth Blvd. Arvada, CO 80002

**Open:** Open to all current USCF members

**Entry fee:** \$30 prior to tournament date - \$35 on site.

**Prizes:** 80% of all entry fees. 1st, 2nd and 3rd overall. Class prizes will be awarded based on available money for prizes.

**Round Times:** See flyer/registration form below

**Entries:** Jesse Cohen 68 E. 109th Pl. Northglenn, CO 80233

**Phone:** (720) 234-1450

**E-mail:** [jessercohen@gmail.com](mailto:jessercohen@gmail.com)

Or register online via PayPal at <https://sites.google.com/site/summitschoolofchess/tournaments>  
USCF membership required.

### **CSCC May Swiss Tuesdays May 5 - 26, 2015**

#### **4 Round Swiss System Tournament.**

**Time Control:** G/75; inc/30

**Site:** Ballroom in the Acacia Apartment Building, 104 E. Platte, Colorado Springs, CO

**Open:** One section open to all USCF members

**Entry fee:** \$10 includes 4 rounds over 4 weeks (1 game / week); \$5 discount for CSCC Supporting Members. Exact cash preferred. No checks for entry fees.

**Prizes:** Cash based on entries.

**Registration:** About 6:00pm until 6:45pm, Rounds: 7:00 p.m..

**Entries:** Paul Anderson

**Phone:** (719) 310-9635 SMS available

**E-mail:** [cschess@live.com](mailto:cschess@live.com)

**Player responsibility:** (1) Inform the TD if you are unable to make any round. You will be paired each round once you have registered even if you haven't arrived at pairing time. Late players have an hour from the start time to show up and move before they forfeit. Keep TD contact information please. Help us avoid forfeit wins and players' not having a game. (2) Forfeit results in \$5 fee and withdraw until fee is paid. No entry to other events by TD until fee is paid.

### **Colorado Blitz Championships 2015 May 9, 2015**

#### **6 Round Swiss System Tournament.**

**Time Control:** Blitz only G03; d/02

**Site:** Sheraton DTC 7007 S Clinton St Greenwood Village, CO 80112

**Directions:** Exit I25 at 197, go east, turn right onto S. Clinton St, hotel about 1/4 mile on right.

**Blitz:** USCF Blitz Rules apply

**Entry fee:** \$10

**Prizes:** 70 % of entry fees. Number of prizes determined by entries.

**Registration:** 5- 6:30 PM Saturday May 9, Rounds: Starting 7 PM or shortly afterwards.

**Entries:** Paul Covington 748 Cardinal Street, Colorado Springs, CO 80911

**Phone:** 719-310-7542 (cell)

**E-mail:** [Checkmate@CovingtonComputers.com](mailto:Checkmate@CovingtonComputers.com)

This is a State Championship Event and requires USCF and CSCA membership.

### **2015 Colorado Class Championships May 9 - 10, 2015**

#### **4 Round Swiss System Tournament.**

**Time Control:** G90; inc/30

**Site:** Sheraton DTC 7007 S Clinton St Greenwood Village, CO 80112

**Directions:** Exit I25 at 197, go east, turn right onto S. Clinton St, hotel about 1/4 mile on right.

**Class Event:** Master/Expert, Class A, B, C, D, and E  
**Entry fee:** \$30 by May 1-Early Bird Special. Afterwards \$40 with \$5 discount for Jr and Senior CSCA Members  
**Prizes:** 70% of Entries will be returned as prize fund. Number of entries will determine the exact prizes.  
**Registration:** 8:30-9:30 Saturday May 9, Rounds: 10 am, 3 pm Saturday; 10 am 3 pm Sunday.  
**Entries:** Paul Covington 748 Cardinal Street, Colorado Springs, CO 80911  
**Phone:** 719-310-7542 (cell)  
**E-mail:** [Checkmate@CovingtonComputers.com](mailto:Checkmate@CovingtonComputers.com)  
 We are planning a Blitz event for Saturday evening after round 2 about 7 PM.  
 Tour Event, CSCA and USCF membership required

### **Attack of the Clones May 16, 2015**

#### **4 Round Swiss System Tournament.**

**Time Control:** G/60; inc/30

**Site:** MiCasa Resource Center, 360 Acoma St. Denver CO, 80223

**Directions:** One block west of Broadway on 4th Ave. Site is at the S.E. corner of 4th and Acoma.

**Entry fee:** Solo (\$45 at site, \$40 pre-registration price, or \$30 DCC member any time), one clone (\$65 at site, \$60 pre-registration price or \$45 DCC anytime), two clones (\$75 at site, \$70 pre-registration price, or \$50 DCC anytime)

**Prizes:** Modified humble pie. Win = 3x Draw = x where x equals two times the average entry fee (each clone counts as an entry) minus expenses divided by 3 times the number of rounds. Example, if the average entry minus expenses is \$30 and there are 4 rounds, a win is worth \$15 and a draw is worth \$5.

**Registration:** 8:15-9:30am, Rounds: 10:00am, 1:30pm, 4:00pm, 6:30pm.

**Entries:** Randolph Schine 8101 E. Dartmouth Ave . #15 Denver CO. 80231,

**Phone:** Brian Wall - 720-483-6768 or Chris Peterson - 720-383-0477

**E-mail:** [brianwallchess3@taom.com](mailto:brianwallchess3@taom.com)

A new, exciting, innovative tournament from the DCC. Original idea by Kevin Seidler, developed by Brian Wall and Chris Peterson.

Every entrant registers as himself but can also register up to two "clones", with a maximum of three entries. No one plays themselves.

Clones play simultaneously, so each round a player with two clones will get three pairings. All games are rated as normal. Normal score keeping rules apply except players with clones may stop keeping score when under 10 minutes if they have multiple games going on. A clone may get help from another person to continue keeping score.

Join the DCC on or before the day of the tournament to receive discounted entry fees.

### **Colorado Senior Chess Championship 2015 & Battle of the Ages June 6 - 7, 2015**

#### **4 Round Swiss System Tournament.**

**Time Control:** G90; inc/30

**Site:** Library 21C

**Directions:** 1175 Chapel Hills Dr Colorado Springs, CO 80920

**Senior State Championship:** This section is for all who are 50 (during 20150 and up

**Tweeners:** This section is for all 21 to 49 years of age

**Under 21 State Championship:** This section is for everyone under 21.

**Entry fee:** \$30 until May 30, then \$40; \$5 discount if 65 and over or Junior under 21.

**Prizes:** Prizes based on Attendance with at least 70% of entries in prize fund

**Registration:** 9:30 - 10 AM , Rounds: Sat 10:15; 2:45 Sun 10; 2:30.

**Entries:** Paul Covington 748 Cardinal Street, Colorado Springs, CO 80911

**Phone:** 719-310-7542

**E-mail:** [Checkmate@CovingtonComputers.com](mailto:Checkmate@CovingtonComputers.com)

CSCA and USCF membership required

Now a Tour Event. May use accelerated pairing in some sections.

### **June Mating Game June 9 - 16, 2015**

#### **4 Round Swiss System Tournament.**

**Time Control:** G/30; d/10

**Site:** Ballroom in the Acacia Apartment Building, 104 E. Platte, Colorado Springs, CO

**Open:** One section open to all USCF members

**Entry fee:** \$5 includes 4 rounds over 2 weeks (2 rounds per week); Exact cash preferred. No checks. FREE for CSCC Supporting Members.

**Prizes:** Cash based on entries. CSCC donates \$5 for each Supporting Member entry.

**Registration:** About 6:00pm until 6:45pm each week, Rounds: 7:00 p.m..

**Entries:** Buck Buchanan

**Phone:** (719) 685-1984

**E-mail:** [buckpeace@pcisys.net](mailto:buckpeace@pcisys.net)

Byes: One 1/2 point bye available. Must be requested prior to the start of Round 3.

*For more information & additional listings on upcoming Colorado events, please visit the CSCA website at [www.ColoradoChess.com](http://www.ColoradoChess.com).*





First World Champion Wilhelm Steinitz (seated right) at the New Orleans Chess Club, photographed in New Orleans in January 1883, by Theodore Lilienthal.

*Key: Leon L. Labatt, James G. Blanchard, James D. Seguin, Charles F. Buck, Fernand Claiborne, Charles A. Maurien, (Steinitz's opponent is unknown).*

## Renew your CSCA membership today!

*If your membership has or is about to expire, it is time to act!*

Name: \_\_\_\_\_  
 Address: \_\_\_\_\_  
 City: \_\_\_\_\_ State: \_\_\_\_\_ Zip: \_\_\_\_\_  
 Phone # \_\_\_\_\_ Email: \_\_\_\_\_



- Junior (under 20) (\$10)
- Adult (20-64) (\$15)
- Senior (over 64) (\$10)

Make checks payable to the CSCA.  
 Send payment & this completed form to:

Shirley Herman  
 1450 Old North Gate Road  
 Colorado Springs, CO 80921